

Maple

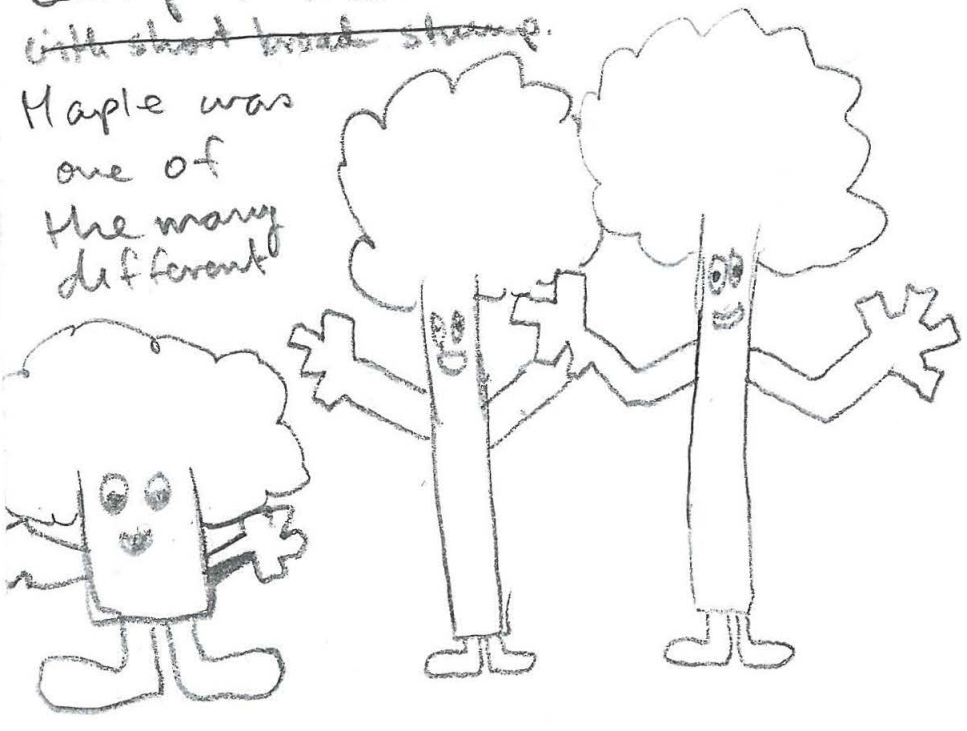
Rigneyla Akhotsang

Maple was created to highlight the important differences in individuals. The distinction between being different and being disabled is an important one that many people fail to make. Differences are demonstrated by *Maple* in the book to show the strengths of the different trees. One tree was not superior to the other nor was one inferior to the other.

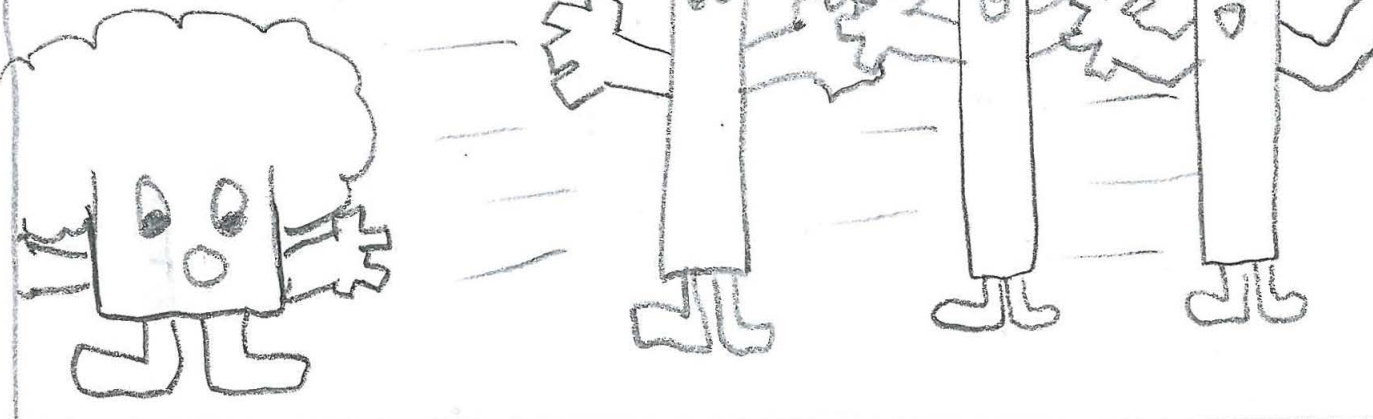
The reason I chose to write about trees to demonstrate disability/difference is because of its vagueness. When a book has a person as a character, often times, children who don't look like the character might fail to connect themselves with the story. However, many children have not seen trees as the main characters of a book. Because of this, they let their imaginations wild and try hard to connect it to their lives, leading to better lessons learned.

The book has various aspects of accessibility features starting with the materials used to create the book. The book is made from corrugated cardboard, which is firm yet flexible to an extent. The trees in the book were all depicted using crumpled tissue paper to give the textured effects of the leaves and ridged brown paper for the trunks. The tissue not only serves as a tangible item for readers to grab on to, but also as a spacer between pages, making flipping between pages easier. Additionally, in the book, all the words are written in uppercase letters. This was done in case there were children who found it difficult to read words with both uppercase and lowercase letters. The cover page is also attractive making this a very accessible book for all children.

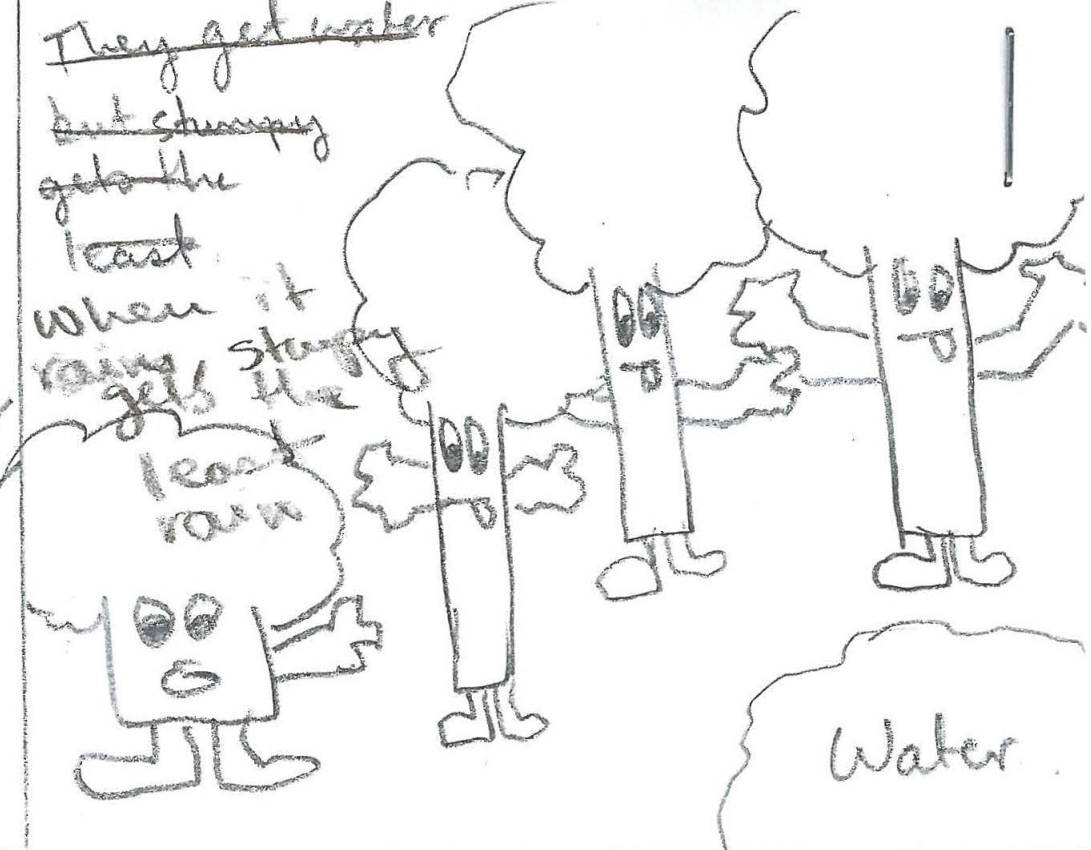
Group of trees one tree with short broad stump.
Maple was one of the many different



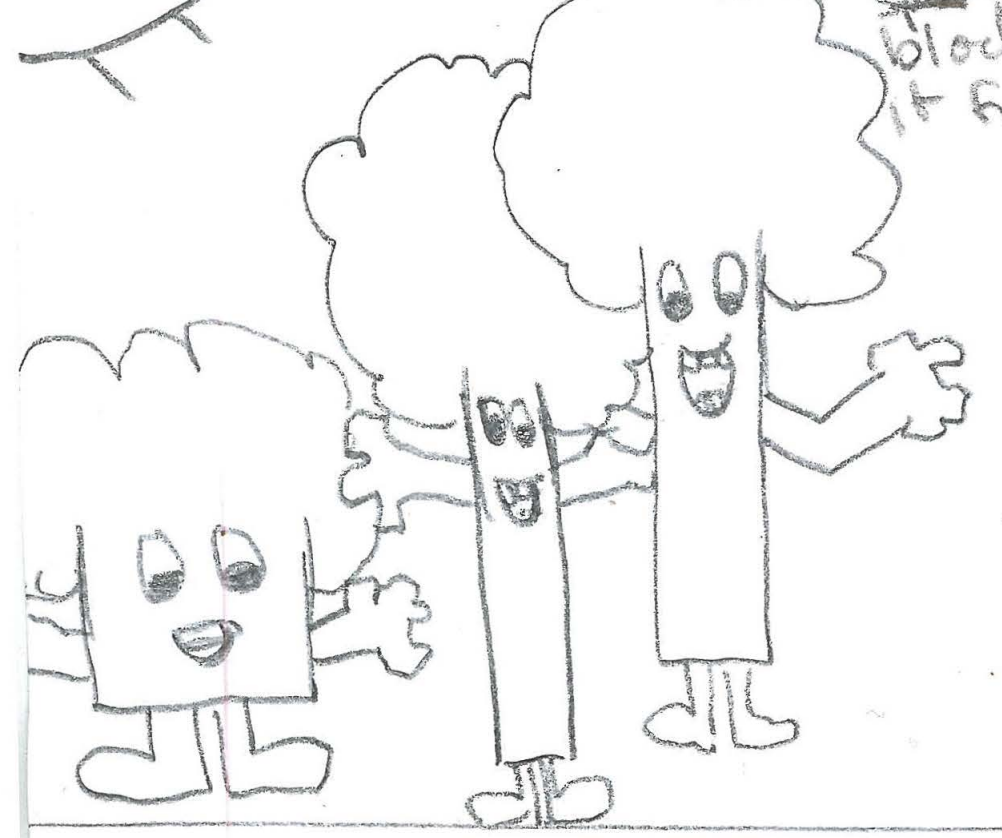
The trees go everywhere together.
But stumpy is always in the back because he can't walk as fast.



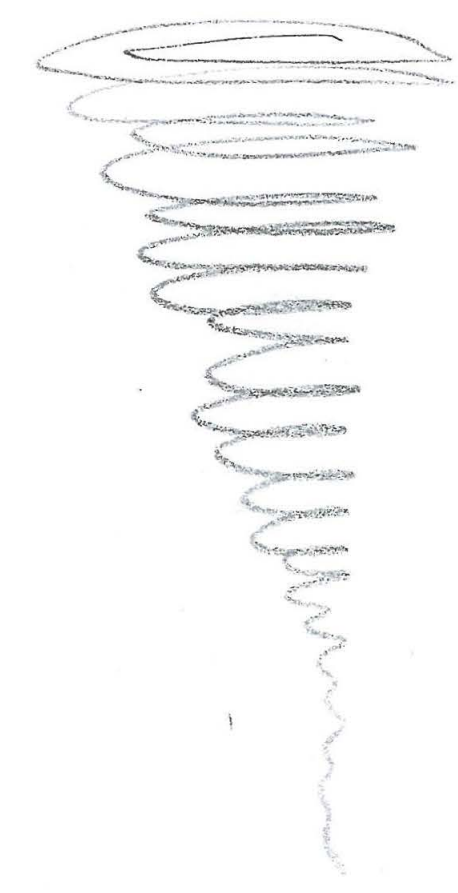
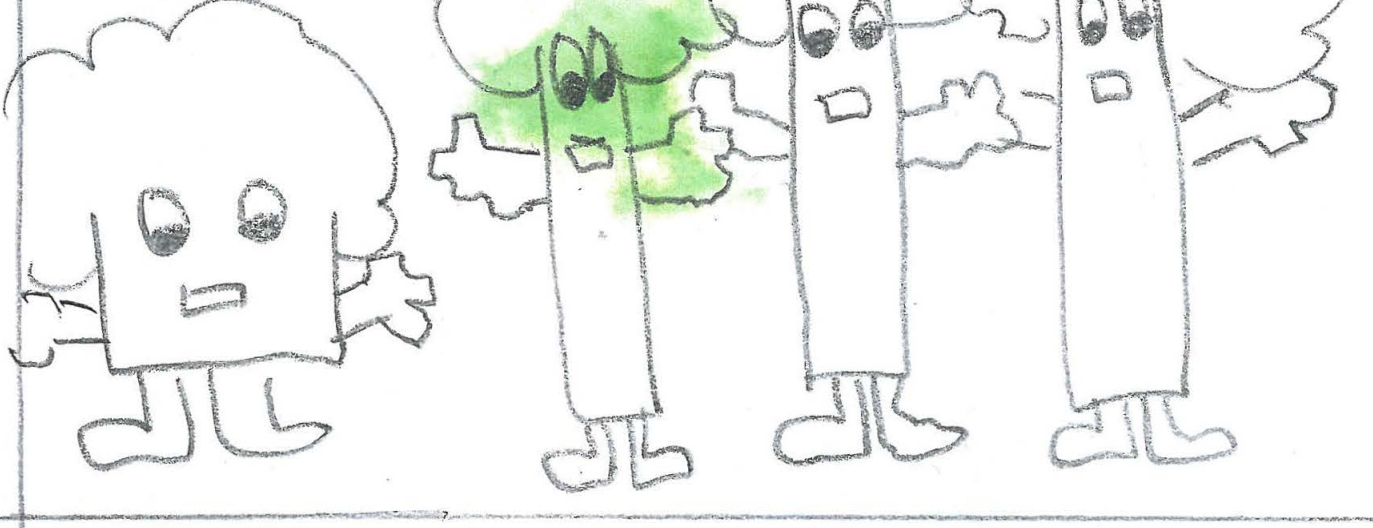
They get water but stumpy gets the least.
When it rains stumpy gets the least rain



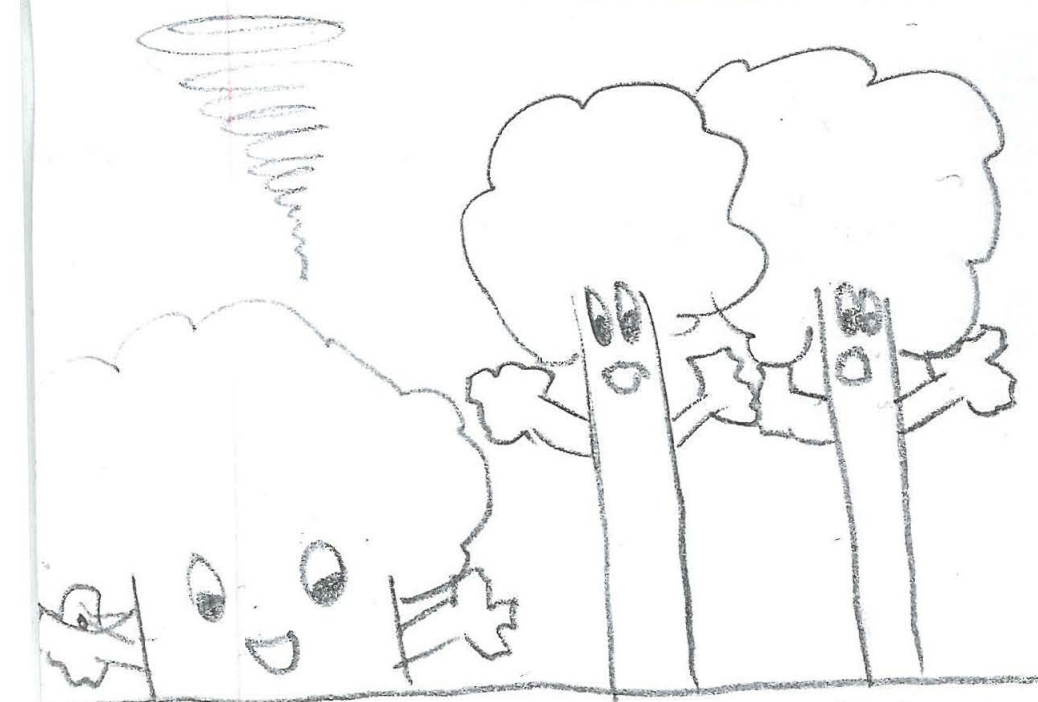
SUN They all get the sun together at the same



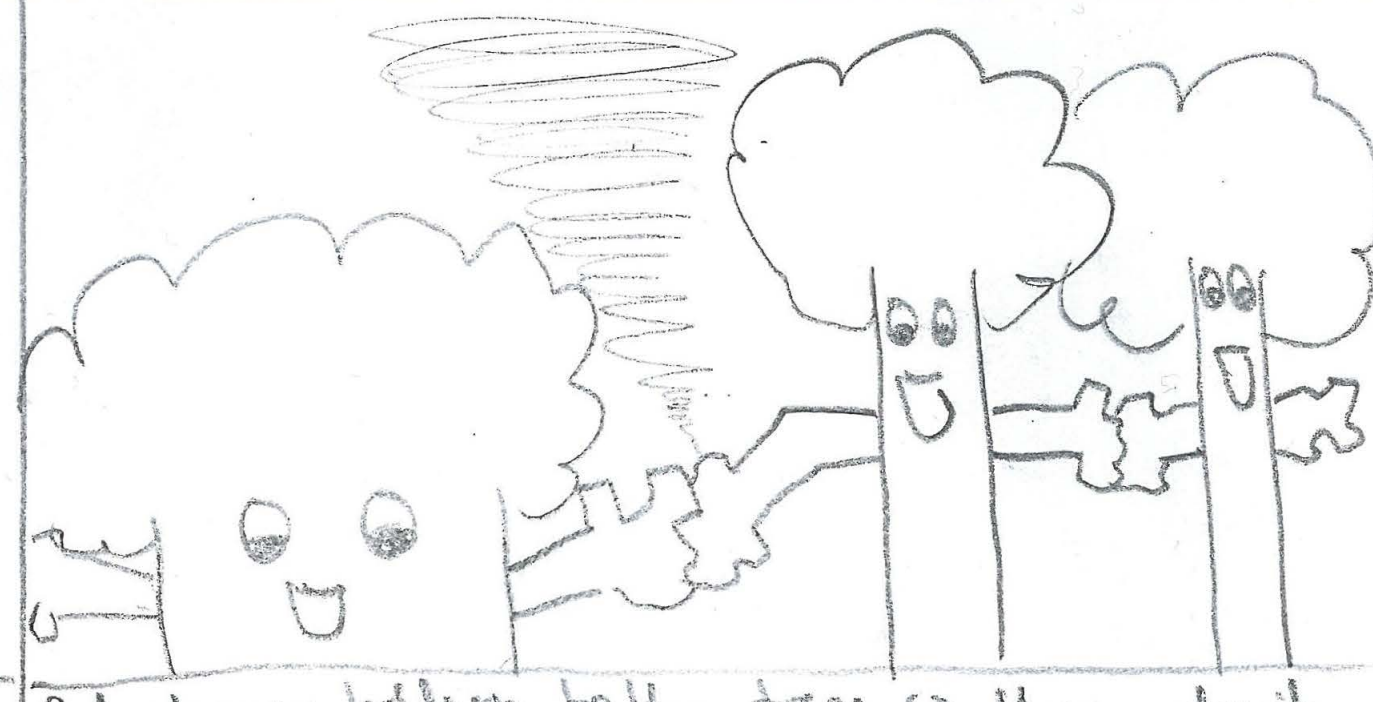
By the time stumpy gets there, the sun has set.
Moon



One day... a tornado comes

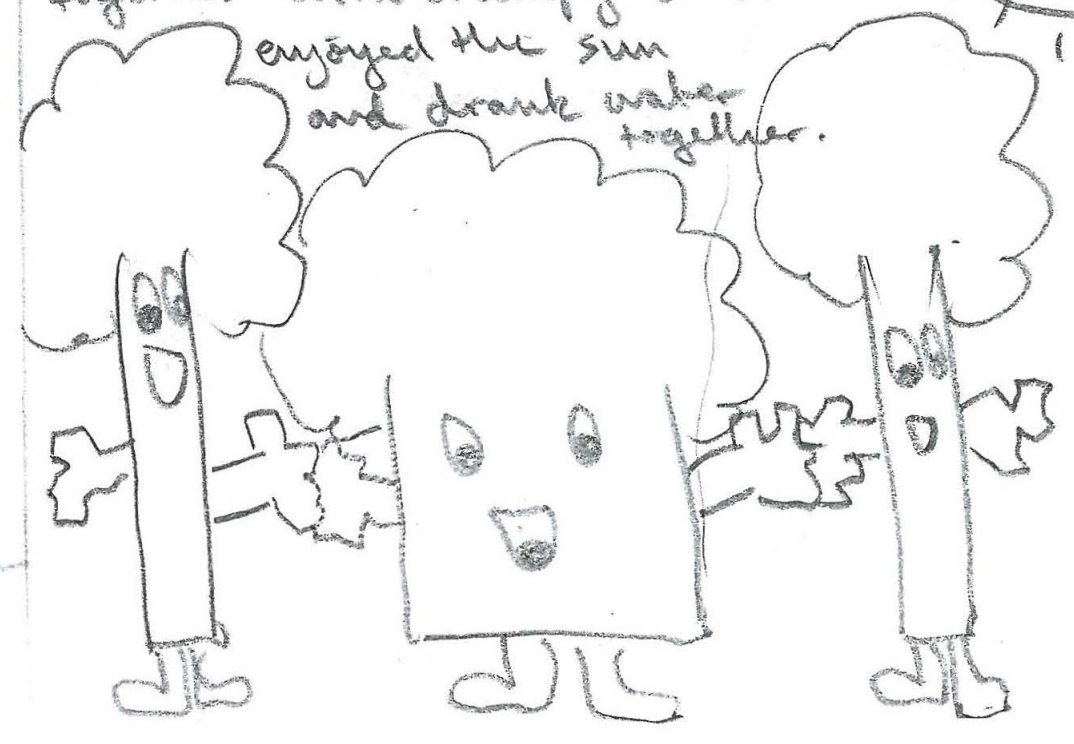


When the tornado comes, the tall trees almost fly out of the ground but the stumpy tree is safe and sound



But stumpy holds on to the trees so they don't fly away and holds them until the tornado passes.

From that day, the trees traveled together with stumpy and enjoyed the sun and drank water together.



Rigneyla Akholsang

Storyboard

CH-90 Exceptional Child

Magnolia Tree

In the end, magnolia flowers bloom

