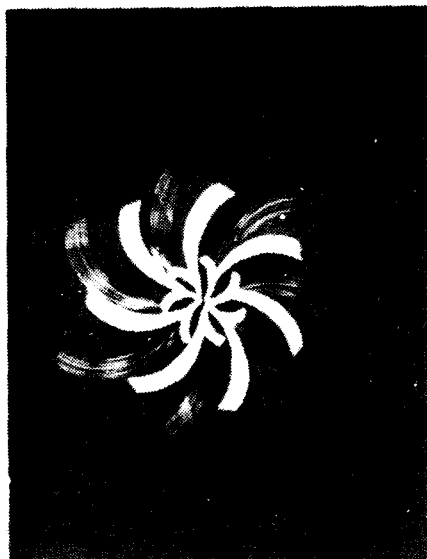
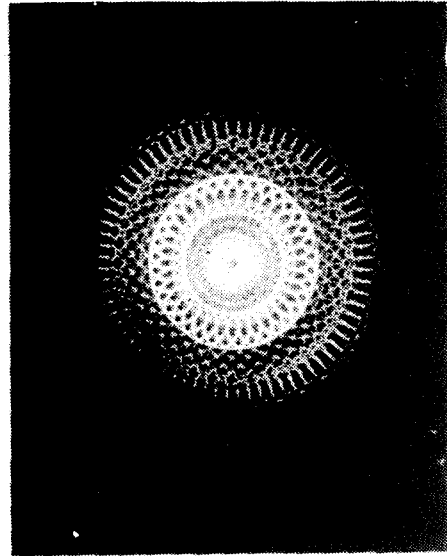
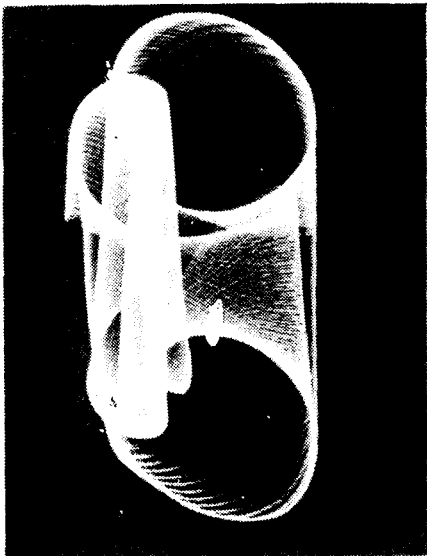


Please recycle this paper.

Wednesday, November 24, 1982

Volume VI, Number 54



Crystal Odyssey and Laserium Starship are the two latest shows at the Hayden Planetarium. (See related article on page 3).

New Environmental Science and Policy Program Established

by CLARISSA FORAN

Environmental issues at Tufts will soon take on added importance due to the establishment of a Tufts Program in Environmental Science and Policy. The program will help focus the efforts of various departments at Tufts which are involved in environmental research and issues, thereby creating a stronger effort in applying for funding through grants. Interdisciplinary environmental projects with the medical

and veterinary schools, the Lincoln Filene Center, and the schools of Arts and Sciences and Engineering are possibilities for the program.

With the present concern over the illegal dumping and disposal of hazardous waste, this Tufts program promises to be timely and pertinent. The initial focus of the program is expected to be the problems of

see ESP, page 6

Israel Has Upper Hand in Israeli-Egyptian Relations

by MARIE CHRISTINE DUGGAN

Marie Christine Aulas, writer for Le Monde Diplomatique, gave a lecture Monday evening sponsored jointly by the Middle East Study Group and the Faculty Political Action Coalition (FacPAC). Aulas, who has been living in Cairo, claimed that the normalization of relations between Egypt and Israel has worked to the detriment of Egypt "while fulfilling Zionist aims."

"Peace is not the ultimate goal of normalization," Aulas explained; "normalization is the logical connection allowing the West to make change in Egyptian society. Egypt can then influence the rest of the Arab World."

She said that the Israelis have taken advantage of peace with Egypt. "Since the '78 Camp David agreement" Aulas continued, "Israel has bombed the Iraqi nuclear reactor, increased settlement in the West Bank, spoiled the Sinai installations in the Sinai paid for by Egypt, and invaded Lebanon." When asked why the Israeli government has been embarrassing the Egyptians, Aulas replied, "Because normalization has been going on despite this. The Israeli invasion of Lebanon did not stop the normalization process."

Meanwhile, according to Aulas, the political atmosphere in Egypt has deteriorated. The University of Cairo was once the center of the Arab intellectual world. Yet since the students are politically aware of the way Israel is exploiting the peace treaty, Aulas said, intellectual discussion

on Egyptian-Israeli relations has been banned. She mentioned that posters protesting the Israeli invasion of Lebanon were prohibited on the Cairo Campus. Now the only forum for open discussion is the American University in Cairo, which is open to foreigners and Egyptians with special permission. English is the main language at the American University, while the Egyptian university uses Arabic.

As for the psychological benefits from the new relationship accruing to Egypt, Aulas pointed out that the Egyptian media is government controlled, and that through Sadat, "Peace was associated with prosperity." But during the first six days of the Israeli invasion of Lebanon, when the Egyptian government was broadcasting reports from American television networks, "a lot of people in the streets began to be angry at what was going on," said Aulas. There was no more TV coverage, and Egypt did not condemn Israel for the invasion of Lebanon until the refugee camp massacres in September. "There is a gap between the population and the government" on how to deal with Israel, said Aulas.

The people's rejection of Israel is reflected in the tourism: 50,000 Israelis have come to Egypt, while only 2000 Egyptians, mainly officials, have gone to Israel. Aulas reported.

Aulas said that economic benefits of normalization have gone mainly to the Israelis, as well. Egypt depends on the outside, pri-

see RELATIONS, page 2

The Tufts Daily

E. ANTHONY EVERETT, Editor-in-Chief
 SUE LESSLER, Executive Editor
 DANIELLE CYR, Managing Editor
 DAVID HILSCH, News Editor
 BRIAN DeBROFF, Associate News Editor
 KIM SIMON, Features Editor
 MARY BUCCI, Graphics Editor
 LISA GOODMAN, Graphics Editor
 JORDAN ROSNER, Photography Editor
 CAROLE A. COLEMAN, Business Manager
 MARINA KALB, Associate Editor
 JOE LUCA, Managing Editor
 MARK BERLIND, Arts Editor
 SUE SIMON, Sports Editor
 ANDY SLOAN, Copy Editor
 JAMIE SAXON, Copy Editor
 JEANNE MOCKARD, Photography Editor

The Tufts Daily is a non-profit student-run newspaper published by the students of Tufts University, weekdays during the academic year. Printing by the Harvard Crimson Inc., Cambridge, MA. Please address correspondence to: The Tufts Daily, Curtis Hall Tufts University, Medford, MA. 02155. Telephone: (617) 628-5000, exts. 218-, 2185. Business hours 9-5 weekdays. U.S. Postage paid in Medford, Massachusetts.

Letters to the Editor

Solar Buildings not "Inefficient"

To the Editor:

Howard Simons wrote an excellent article on Passive Solar in Monday's Tufts Daily. In general, he accurately reported what Bob Jones had to say. There were, however, a few errors that should be corrected. Bob Jones is a full time passive solar researcher at Los Alamos National

Laboratories and is no longer professor of Physics at the University of South Dakota.

A much more important error is the statement that "Boston solar buildings are 'economically inefficient' because Boston's less sunny than in areas such as the Southwest." Buildings in Boston can easily and economically receive 50% of their

heating needs from passive solar (compared to 80 or 90% in parts of the south-west). Insulation levels must also be higher in Boston. The majority of the rest of the heat required can come from energy produced by the occupants. The resulting building will use 10 to 25% of the auxiliary heating energy a standard new building will use. With careful design, buildings requiring no auxiliary heat are economically feasible. (See the Saunders Shrewsbury House by W.A. Shurcliffe). An exhibit in the Lufkin Library shows two of my demonstration projects which are buildings in the Boston area with large economical solar heating contributions. There are hundreds of other examples.

Thanks again for a good article.

Ronald K. Thornton
 Asst. Professor of Physics

RELATIONS, continued

marily on the US, for 60% of its agricultural supplies. The US would like to turn the role of agricultural supplier over to the Israelis. Right now, there is a discrepancy between Israel's dependence on Egypt and Egyptian dependence on Israel: Israel imported \$600 million last year, mainly oil, while Egypt imported \$1200 million worth of mainly food products. Furthermore, Aulas noted that if an Egyptian businessman has interests in the rest of the Arab world, he must not deal with Israelis or his business will suffer.

When asked about the possibility for peace in the region, Aulas said, "Where is the solution? The farther I go, the more I feel it is not in the United States. No one in the Begin government or the Reagan Administration is really trying to understand the basic Arab demands."

Aulas pointed out that the

see RELATIONS, page 6

CORRECT
 SPRING '83 EXAM SCHEDULE

(Please note that the hours the exams are given have been changed)

		9 a.m.	12 noon	3 p.m.	7 p.m.
Fri.	May 13	Block 1	Block 6	Block 7,C	Block K
Mon.	May 16	FR 1,2,3,4 SPN 1,2,3,4	Block 3	Block 8,E	Block L
Tues.	May 17	MTH 12, 38	MTH 4,5,6 11,13,46	Block 4	Block J
Wed.	May 18	PHY 12, 12N	Block 2	GEO 8 CSC 12	Block H
Thurs.	May 19	Block 0	Block 5	ES 4	Block G
Fri.	May 20	Block A	Block B	Block 9,D	

Courses scheduled in the X,Y,Z blocks are usually examined at a mutually convenient time agreed upon by the instructor and students.

Lasers Once Again Light Up Hayden Planetarium

by MARK BERLIND

Boston now has a new way to see the light. Laser Images, Inc., the good people who brought us Laserock and Laserium, is currently presenting two new visual and audio extravaganzas at the the Hayden Planetarium.

Entitled Crystal Odyssey and Laserium Starship, respectively, the former really does, as advertised, offer a "new dimension" to the form, but the latter is unadventurous at best.

The first laser-music presentation was held in 1973, and the market has been expanding rapidly ever since. The adult-leaning shows have impressed their clientele with dazzling laser effects in a benign atmosphere, while the rock-oriented ones have in their marriage of high voltage music and spaced-out lighting effects discovered a perfect setting for teen-

agers to relax in or after or while getting stoned. The adult shows do not attract a lot of repeat business. Therefore, although the number of people who have seen the shows has increased, the company has felt the need to attempt to create a completely different program that will keep folks flocking to the planetariums.

So Crystal Odyssey is kind of a 'Sgt. Pepper' of laser shows— a concept presentation that squeezes classical music into a comic book story for the youngsters involving adventures to different stars. On a literal level the plot is silly, using words like "DNA" and "myriad", and involving among other things an evil alien so diabolical that he'll rip your eyeballs out and throw them into the eternal fire (their description). Not very appetizing,

but the idea still works because it presents a coherent context for the music that allows the imagination to give more concrete images to the dancing illumination overhead that is, after all, the star of the show.

As usual for laser shows, the colors are brilliant and true, and the moving images breathtaking in their dexterity and beauty. Highlights of this program include Grieg's "In The Hall of the Mountain King," which

is used to dramatize a spectacular spaceship landing, and a surprisingly erotic Ravel's "Bolero," in which, believe it or not, two laser entities of different colors copulate, produce an offspring and then proceed in an orgiastic dance of exhilarating celebration. By the end of the journey, both ears and eyes are immensely satisfied.

Much less successful is

see LASERS, page 6

HILLSIDE LIQUOR MART

323A Boston Ave., Medford Hillside

1 1/2 minute walk from Tufts

395-5020

CAPORALE'S LIQUORS

2153 Mystic Valley Parkway
Somerville, MA

395-6200

Imported & Domestic

Beer, Wines & Liquors

also 1/2 and 1/4 Barrels of

IMPORTED & DOMESTIC BEERS

HOUSING

NOTICE

Singles

Wait

List

Procedure

The Housing Office will maintain a waiting list for single rooms. Only those individuals who entered the lottery and were not scheduled for an appointment are eligible. Your name is not automatically placed on the wait list. YOU MUST COME TO THE HOUSING OFFICE AND PLACE YOUR NAME ON THE LIST. The Housing Office will automatically place individuals on the list if they are not attending Tufts this semester.

Applications for the wait list will be accepted beginning Tuesday, November 23, 1982. The application deadline is Wednesday, December 1, 1982. The order of the wait list will be determined by your original lottery number.

EVERYTHING

E.A.T. IN

E.A.T. STAFF

Karen R. Buys

Wm. Michael McDermott III

Barbara Hardwig

Jennie Schaefer

William H. Zuber III

FILM

Film

The German Dept. is showing Nordsee ist Mordsee by Hark Bohm 1976, color at Robinson 253 on Wed., Dec. 1 at 8:00 p.m.

WOMAN'S CENTER FILM FESTIVAL
MON, NOV 29, Barnum 104, 8pm
"THE OTHER HALF OF THE SKY: A CHINA MEMOIR", an intimate dialogue between Chinese and American women, with Shirley MacClaine.

TUES, NOV 30, AV Room Wessel, 8:30pm. **"HELP ME TO FIGHT"** Documentary about the Aid to Incarcerated Mothers Program. A speaker from AIM at 9pm.

WED, DEC 1, Anderson 112, 8pm- **"AIN'T NOBODY'S BUSINESS"**, documentary that presents prostitutes as real people. Speaker from the Prostitute's Union of MA.

THURS, DEC 2, Barnum 114, 8pm- **"FUNDI: STORY OF ELLA BAKER"**, documentary on the civil rights activist who influenced many famous leaders of the black power movement.

NOTICES

THE ARTS HOUSE is now accepting artwork: painting, sculpture, photography, etc. for display in the NEW house gallery. Open to all Tufts students. Call Lauren or Ellen at x2907.

Tufts Magazine Review is accepting student submissions of short fiction, poetry, art, and photography. Please leave material at the Reserve Desk in Wessell Library

Hakol the voice for Jewish artists, poets, writers and photographers is now accepting work for review to be published. Artwork should be 2-D, b&w, and the literary focus is on fiction-non-fiction stories. Drop submissions off at the Hillel Lounge, 2nd floor Curtis or call Anne at x3242

MUSIC

TUES, NOV 30- Student Recital. Students in the Tufts Applied Music program. 4pm, Alumnae Lounge, FREE.

sponsored by
 the ARTS HOUSE
 and
 the TUFTS DAILY

ARTS at TUFTS

THEATER

Shear Madness-Charles Playhouse, 76 Warrenton st., Bost. Tuesday thru Friday 8pm. Sat. 6:30 and 9:30pm. Sun. 3pm and 7:30 pm.

Almost an Eagle

Wilber Theater, 246 Tremont St. Boston. Nov.16-Dec.11. Mon-Sat 8pm, Wed and Sat 2pm. Tix \$13.50-\$27.50 Comedy

EVITA-Shubert Theater, 265 Boylston, Boston. OCT 13-JAN 29. Mon-Sat 8pm, Wed-Sat, 2pm, \$16.50-32.50.

The Mortal Call

Theater Loft, 811 Boylston St. Boston. Nov.19- Dec.18. Wed.-Sat. 8pm. Tix \$5.00 Premier of drama by William Kramer

WHODUNNIT-Colonial Theater, 106 Bolyston, Boston. Nov. 26-Dec 11. Performances Mon-Sat 8pm, Wed & Sat 2pm. \$13.50-27.50. Comic mystery by Anthony Shaffer starring Jack Weston, Hermione Baddeley and Fred Gwynne.

A CHILD'S CHRISTMAS IN WALES

Lyric Stage, 54 Charles, Boston. Nov 26-Dec 24. Wed-Sat 8pm, Sat 5pm, Sun 3pm. \$5.50-8 depending on the day. Dylan Thomas' remembrance of a childhood Christmas.

MARIE AND BRUCE-Alley Theater, 1253 Camb. st., Camb. Thru Nov. 27, Thurs-Sat 8pm. \$6 students. Comedy about divorce by Wallace Shawn.

SNOOPY-Charles Playhouse, 74 Warrenton WED-FRI, 8pm, SAT 6:30 & 9:30pm, SUN 2 & 5:30pm. \$14-18. New musical starring David Garrison Kay Cole, Stephen Fenning.

THIS MORTAL COIL-Theater Loft, 811 Boylston, Boston. Thru Dec 18. Wed-Sat 8pm. Tix \$5. World Premiere of drama by William Kramer.

E.A.T. OUT

READINGS

Snow Dragon- Workshop for Poets, Composers and Visual Artists. Kaji Studio, 40 St. Stephen st., Boston. Ongoing to Dec.11 Tuesdays, 9:30pm

New Writers Collective

Top Floor, Community Church Building, 565 Boylston St. Boston. Open Readings every Tues. at 8pm., Free. A;; art forms are welcome

MUSIC

BOSTON SYMPHONY ORCHESTRA-Symphony Hall, 301 Mass Ave, Boston. NOV 26, Joseph Silverstein conducts, Mozart Divertimento No. 10, Piston, Symphony No. 6, Sibelius, Symphony No. 1.

DEC 3- Sir Colin Davis Conducts, Elgar, "The Dream of Gerontius" featuring the Tanglewood Festival Chorus.

Boston Visual Artists Union 77 North Washington St., Boston. Tues.-Fri.11-6, Wed. 11-8, Sat.11-4. Thru Dec. 3: "Reflections," various treatments of reflected images.

Frameworks, 1967 Mass. Ave., Cambridge. Mon.-Sat.10-6, Tues.-Thurs. until 9pm. Thru Nov. 30: "Boots and Shoes," drawings by Don Stinson.

Friends Gallery, 383 Huron Ave., Cambridge. Tues.-Sat. 10:30-4:30. Thru Nov.27: wearable art.

EXHIBITS

WORDSMITH GALLERY-1112 Mass ave, Camb. Tel. 491-5525. Thru DEC 1-watercolors by Gracia Dayton.

SOCIETY OF ARTS AND CRAFTS-175 Newbury, Boston. Tel. 266-1810. Nov 23-Dec 31-Sculpture by William Accorsi

ZIONIST HOUSE-1 Commonwealth Boston. Tel 267-3600. Thru Nov 30-Watercolors of Jerusalem by Allen Bernholtz.

HARCUS KRAKOW GALLERY-7 Newbury, Boston. Tel 262-4834. Thru Dec 1-Paintings by Robert S. Zakanitch and prints by Helen Frankenthaler.

GUILD OF BOSTON ARTISTS-162 Newbury, Boston. Tel 536-7660. Nov 23-Dec 11-Paintings by Michael Sorrentino.

GALLERY NAGA-67 Newbury, Boston. Tel 267-9060. Thru Nov 27-Assemblage by William Georganes.

GOETHE INSTITUTE-170 Beacon, Boston. Tel 262-6050. Thru Dec 10-Photographs of "Greta Garbo in Berlin."

MUSEUM OF FINE ARTS-465 Huntington, Boston. Tel 267-9300 Thru Jan 2 "Living National Treasures of Japan", Thru Nov 28 "Thomas Eakins: Artist of Philadelphia". Museum admission FREE with Tufts Student ID.

MUSEUM SCHOOL GALLERY-230 Fenway, Boston. Thru Nov 28, "Suspended Animation," drawings, sketches, and paintings from workbooks and films of 13 animators. Museum of Fine Arts 465 Huntington Ave, Boston Living National Treasures of Japan. Thru Jan.2

CLASSIFIEDS AND NOTICES

LASERS. continued

Laserium Starship, another, weaker version of Laserock. The lasers themselves are interesting and well executed, but in this case it's the music that's lacking. Supposedly a "cosmic rock" show, most of the music is actually bland, non-vocal synthesizer drivel that occasionally has a rock beat. A curious amount of orchestrated movie music is also included from Star Wars, etc., leaving one to wonder if the producers really have any idea of exactly what audience they're trying to target.

The show picks up only near the end with a performance of the second half of Yes' "Awaken". With its soaring vocals, speed freak guitar and cathartic church organ, it stands out as the only segment of the evening that lives up to the show's title. In all, though, the original Laserock has both more laser and more rock than this unimaginatively thrown together spinoff.

Both Crystal Odyssey and Laserium Starship will be generating electricity at the Hayden Planetarium at the Museum of Science with a varied performance schedule. Tickets for each show are \$4, and they are expected to run through the winter.

RELATIONS, continued

Reagan Plan is based on UN Resolution 242, which calls for Israeli withdrawal from occupied territory, but the Israelis have not yet accepted it. About the possibility of a federation between Palestinians in the West Bank and the Jordanians she said, "federation means that the Israelis will get out of the West Bank, give the West Bank not to the Palestinians but to the Jordanians. Do you think Begin will be able to agree even on this?"

Yet Aulas said she did not see a change in the Israeli government as the solution: "We must not dream about Labor (the center-left opposition to Begin's Likud bloc). It is the same policy but another rhetoric."

Milla's
Automotive Sports Center

AUTO RENTALS

DAILY, WEEKLY,
MONTHLY

One Broadway, Arlington
643-6500

ESP, continued

hazardous waste. Massachusetts, with its many industrial facilities, is having difficulties finding areas for hazardous waste disposal plants. A referendum which was passed on the recent November ballot is not only going to add regulations to the building of such plants, but it will also increase the demand for environmental research. Last year a news media briefing was held at Tufts concerning the issues surrounding hazardous waste.

Robert Hollister, Chairman of the Department of Urban and Environmental Policy, is also chairman of the Faculty Committee. The Faculty Committee includes Linfield Brown, Chairman of the Department of Civil Engineering, Stuart Langton, Director of the Lincoln Filene Center, Morton Madoff, Professor of Community Health at Tufts School of Medicine, Norton Nickerson, professor of environmental studies and Carla Ricci, Assistant Dean of Arts and Sciences for Research.

The Faculty Committee hopes to start a research fund drive this year, support various environmental projects in which Tufts is participating, and involve the work of Tufts committee on hazardous waste. Through an inter-disciplinary approach, the program in Environmental Science and Policy will involve a university-wide effort in environmental research and issues.

Services

Need a paper typed? Andy's Typing Service will handle it for \$1 per page. Call 396-9071.

Golden Light satisfies those late night hungerers with nightly deliveries. Call 666-9822.

***Hop on the TSR Tufts Bus to take you home for Thanksgiving! TSR Travel is offering buses to N.Y., N.J., L.I. & Westchester County. All buses are leaving on Wed. Nov. 24 and returning on Sun., Nov. 28. All roundtrip tickets are \$35 and currently on sale at the TSR office, 17 Chetwynd Rd.. For more info call 381-3224. Hurry! Space is limited!!

INTERNATIONAL STUDENT I.D.'s '82-'83 are issued every Tues. and Thurs. from 2 pm - 4 pm in the International Office, 13 Sawyer Ave. You must go to the Registrar's Office for form and signature. Then bring form, \$6.00 cash and a photo to the International Office for instant processing.

TENNIS LESSONS: Southampton, Sutton East indoors in NYC. Currently assistant coach at Tufts. 5 hrs/\$45. 628-5421 or leave number at 495-1109.

Health and Sexuality Counseling Confidential counseling available in the areas of birth control, sexual preference, nutrition, rape, and relationships by Tufts Health and Sexuality Counselor, Peggy Barrett. Call 381-3292 for appointment.

SHOCKED BY YOUR LATEST PHONE BILL? START SAVING UP TO 50% ON YOUR LONG DISTANCE CALLS: TRY MCI. CALL KELLY JOHNSON AT 776-0986 FOR INFO.

For Sale

CHECK OUT LEGAL AUDIO: We carry new audio components and have virtually every brand. We even discount the "no discount" high end equipment. We offer professional installation and full warranty service. Check us out before you buy elsewhere. Maxell UDXL-II \$2.99 Discwasher D-4 system \$10.95 (plus tax on all items). Call Steve at 628-8828 or Stu at 623-6232.

For Sale: 2 pieces (loveseat and chair) indoor/outdoor furniture w/cushions, \$15. Women's gold suede pants, size 6, never worn, \$35. Call 729-8924 days or evenings until 9 PM.

TRAVELING ABROAD? 1982-3 International Student I.D.'s are on sale Tues. and Thurs. from 2-4 PM in the International Office, 13 Sawyer Ave. Stop by for an application and BEAT THE RUSH!!

Wanted

INTERESTED IN A HEALTH CAREER? Tufts-affiliated New England Medical Center needs volunteers in emergency, laboratories, Social Service/Interpreter office, dental clinic, pediatrics and other career-related assignments. Located in downtown opposite the Medical School, the hospital is easily reached via the Tufts bus and the MBTA Essex, Washington, and Boylston stations. A 3-4 hour minimum weekly commitment is requested. Call LCS representative Jeanne at 625-4501, for referral to the hospital.

HOLIDAY FUN: Interested in making someone's holiday special? Holiday Project of Boston needs volunteers to visit children and the elderly for Chanukkah on Dec. 12 (and Christmas on the 25th!) these people are in hospitals and institutions for their holidays and look forward to your visits. All transportation is provided and it takes only four hours of your time. Trv a little spirit! Call Jeanne at the Leonard Carmichael Society for more information. 625-4501.

Driver Wanted - \$5.50/hr. The New York Times and Boston Globe need a car driver to deliver Sunday papers in and around Tufts. Call 666-5275.

FREE ROOM AND BOARD in exchange for housework and babysitting for Winchester mother and daughter age 5. Daily ride to/from Tufts. Non-smoker. 729-7684. Leave message.

Freshman exploration Co-leader for course on "Juggling" needed. Spring or Fall semester '83. Includes juggling oranges, eggs, schedules, relationships, roles priorities, budgets and commitments. An actual juggler would be preferred but not necessary. Please call Sue at 628-6605 as soon as possible.

Housing

LUXURIOUS HOUSING OFFERED: Avail. Dec. 1 in Ball Sq. apt: 5 Bedrooms, 2 Bathrooms, Dishwasher & other amenities.. live w/ 4 of the most easy going people to be encountered. Call 666-3027.

Space available for one male or female in well furnished apt. 10 minute walk from campus. Nice roommates. 10 days free rent if started Dec. 20 otherwise 2nd semester. Call Pete, Mark or Mike 395-8001

MALE OR FEMALE FOR 3-BDRM APT., 8 minutes from campus, \$150/month + heating. Preferably non-smoker. Call 628-6161 evenings

MALE VACANCY IN THE INTERNATIONAL HOUSE: Starting Spring '83 semester sharing a double. If interested, stop by the International Office, 13 Sawyer Ave. and fill out a Culture House application.

Monday

Are you confused about what math courses to take next semester? Come to an INFORMATIONAL MEETING of the MATH SOCIETY on Monday, 11/29 at 3:30 PM, BP #111. Fellow math students and upperclassmen will discuss the courses offered and answer any questions. Refreshments will be served!!!

Mon. Nov. 29th in Barnum 104 at 8:00pm. "The Other Half of the Sky: A China Memoir"- an intimate dialogue between Chinese and American women with Shirley Maclaine.

ATTENTION! ASCE Elections will be held Monday, Nov. 29th, at 3:30 in Burden Lounge. An interesting film will be shown, and wine and cheese will be served.

There will be a picture of the Concert Board taken for the yearbook in front of Cohen on Mon., 11/29 at 3:45.

JPAC MEETING MON. NOV. 29th at 8:00 PM in the Hillel Office, 2nd floor Curtis. All interested persons are encouraged to attend, veterans and rookies alike.

Tuesday

Women's Center Film Festival Tues. Nov. 30 AV Room 8:30 pm. "Help Me to Fight", Documentary about the Aid to Incarcerated Mothers (AIM) Program. Speaker from AIM at 9:00.

INTERESTED IN A CAREER IN PSYCHOLOGY? The Psych Society will be sponsoring "Careers Night" on Tues. Nov. 30th at 8:00 PM in Alumni lounge. Come find out about getting into grad school as well as engineering psych, clinical, and experimental psych and career opportunities.

All Tufts Students!! You are cordially invited to an Open House sponsored by the Community Health Program to be held Tues., Nov. 30 from 4-6 PM in the Community Health Lounge in the basement of Miner Hall. Come see how the program can enhance your major! Refreshments will be served.

General

JAZZERCISE, the #1 dance-fitness program in America is holding classes every Monday and Wednesday at 5:15pm at the Catholic Center, 58 Winthrop Street. (across the st. from Jay's Deli). There is continuous registration so everybody is welcome. Make the first step towards a better you.

GENERAL HOSPITAL FANS: "Heather Weber" will be speaking at Tufts this week. Watch the newspaper for further information.

Tufts Political Action Coalition (TPAC) is meeting every Sunday at 8 PM in Eaton 201. Subcommittees meet after the general meeting.

EXPLORATION LEADERS NEEDED. JUNIOR OR SENIOR STUDENTS interested in designing and leading a Freshman Exploration next semester should come by the EX COLLEGE in BROWN HOUSE to pick up an application.

ATTENTION ALL STUDENTS INTERESTED IN CPR. The Student Health Advisory Board will be sponsoring a two day CPR class on Dec. 1-2 from 6-10 p.m. in Jackson Gym. Space is limited. This class can be used for recertification if you're already certified. No Charge. We look forward to seeing you there. To register call Jack London at 625-2542.

ALL STUDENTS WHO WISH TO TAKE COMPUTER SCIENCE COURSES OR MATH 12 SHOULD SIGN UP IMMEDIATELY IN THE MATH DEPARTMENT

Rides

Ride Offered to WESTCHESTER, or Scarsdale area. Share a rented car, maximum cost/person- \$33. Will leave Wed. afternoon. Call Lenny at 623-2831.

Ride needed to N.J. Anytime Wed. Will share driving, expenses, etc. call Sandy or Dan at 623-5315 (anytime)

Ride needed to Bethlehem, Pa., North Jersey or nearby on Wednesday after noon. Will share D & E. Call David Nemo 396-3774.

RIDE WANTED - TO N.Y. CITY AREA LEAVING WED. NOV. 24 AND IF POSSIBLE RETURNING SUN. NOV. 28. WILL SPLIT EXPENSES. CALL ANDY AT 776-2466 ANY TIME.

Ride wanted: Please take us to New York or Northern New Jersey for Thanksgiving Break. We'll leave when you do, and help with gas and tolls. Call MaryAnne or Beth at #2005. Thanks!

WANNA SHARE A CAB?? I'm going to Logan today, and am willing to leave any time between 1:00 and 4:00pm- my flight leaves at 6:30. Call me at 628-8183.

editorial spring '83

elections

TUES., NOV. 30 - 9 PM

for **THE TUFTS DAILY**

ENTIRE STAFF IS ENCOURAGED TO ATTEND

ALL POSITIONS AVAILABLE

The Tufts Daily

Executive Editor Managing Editor	Editor-in-Chief	Associate Editor Managing Editor
Associate News Editor Features Editor	News Editor	Arts Editor Sports Editor
Graphics Editor Graphics Editor	Layout Editor	Copy Editor Copy Editor
Photography Editor		Photography Editor
	Business Manager	

The Tufts Daily is a non-profit student-run newspaper published by the students of Tufts University, weekdays during the academic year. Printing by the Harvard Crimson Inc., Cambridge, MA. Please address correspondence to: The Tufts Daily, Curtis Hall Tufts University, Medford, MA. 02155. Telephone: (617) 628-5000, exts. 2184, 2185. Business hours 9-5 weekdays. U.S. Postage paid in Medford, Massachusetts.

You Could Fill in the Blanks

DAILY OFFICE, CURTIS HALL BASEMENT

REFRESHMENTS SERVED