

SCALDIN' MALDEN

RED HOT OPPORTUNITIES FOR TUFTS UNIVERSITY

WELLINGTON CONNECTOR

TUFTS

"This capstone design experience includes pre-site investigation and site planning, detail drawings, bidding documents, quantity take-off and cost estimates, planning and scheduling, as well as contracts and procurement activities. The final group design project consists of a comprehensive written report and visual presentation using computer applications such as computer-aided design and electronic spreadsheets."

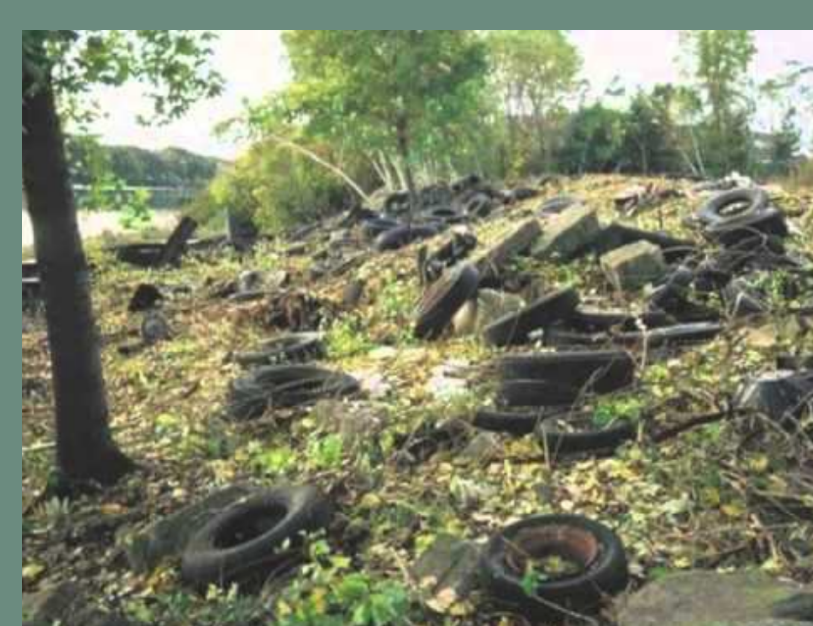
-Tufts CEE Capstone description

COMMUNITY

"The support of Preotle Lane Associates, while across the street from the tracks, is key to this project. Their support is important because a crossing at this location would lead residents to walk directly through their property to access the river. John Preotle has been both a supporter and advocate for this project and actively encourages the general public to access the river through his property at 200 Rivers Edge Drive."

-Alicia Hunt, Medford Env. Agent

PAST



PRESENT



FUTURE



CREW TEAM PARTNERSHIPS

TUFTS

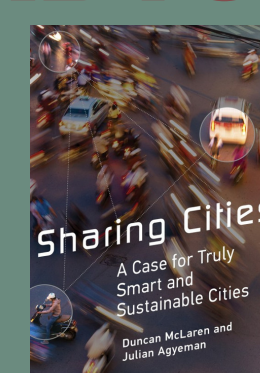
The Tufts resource in this project is very simply the Tufts University Crew Program, their people, and their networks. MyRWA's health as an organization grows in innumerable ways when it engages more people.

COMMUNITY

The Mystic River Watershed Association depends on volunteers and charitable donations to operate effectively. While the watershed's community members already contribute significantly to MyRWA, the Association recognizes that continuing to cultivate these relationships through outreach events is critical for future success in watershed initiatives. Patrick Herron, MyRWA director mentioned specifically that MyRWA would love to come up with programs to engage crew students and alumni.

THE SHARING PARADIGM

Defined by Julian Agyeman's in his book "Sharing Cities"



Envisions models of urban sharing that are not always commercial but also communal, encouraging trust and collaboration. The selection of these projects is inspired by the breadth of sharing encouraged in the sharing paradigm.

PLANT RAFT RESEARCH

TUFTS

"TIE's graduate research fellowship can be used to conduct independent, interdisciplinary environmental research projects. This is an opportunity for students to conduct primary data collection within their own area of interest and obtain mentorship and guidance from Tufts faculty and TIE staff to help build research expertise. Selected students will receive funding of up to \$5,000 per student."

-Tufts Institute of the Environment

COMMUNITY

The MVDC's Licensed Site Professional (LSP), Jeff Nangle, personally emphasized that floating treatment wetlands (plant rafts) would be a natural follow up or "add on" to the comprehensive ecosystem restoration plan that is currently in the design phase by the Army Corps of Engineers.

URBAN PLANNING ED.

TUFTS

Tufts Student Teacher Outreach Mentorship Program (STOMP) "pairs Tufts University students with school teachers in the greater Boston area to create and implement engineering curricula in the teachers' classrooms." The STOMP website lists "Certified Units" – this list includes topics entitled Build a City, Engineering and Conservation, and Water Filters, which all describe specific classroom activities for students to complete. These three could be tied to the real-world work taking place along the Malden.

COMMUNITY

According to members of the Malden River Master Plan steering committee, former MyWRA board members, and residents of Malden, MA, there is abundant need for flexible educational programing to fill the schedule of school and after school programs. The Malden Teen Enrichment Center is one example of an organization that is seeking "enrichment activities and opportunities [for Malden teens] to develop relationships with adults and peers."

WATER TAXI

TUFTS

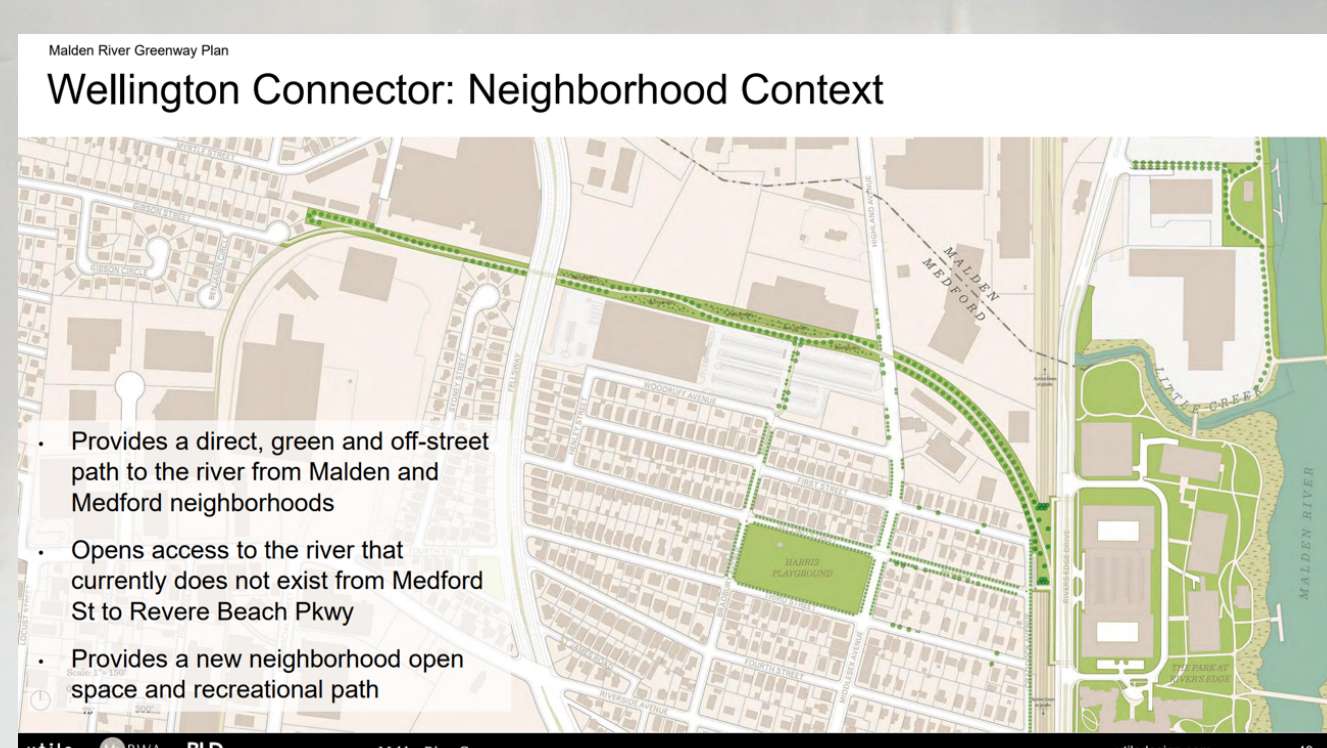
Tufts University has a robust Entrepreneurial Leadership Studies department that requires students to draw up business plans for example businesses every semester. There are several members of the Tufts crew team in these classes who have expressed interest in pursuing the water taxi as the focus of their ELS semester. Jack Derby, director of the Entrepreneurship Center, plans to assess the Water Taxi's fit with the ELS curriculum.

COMMUNITY

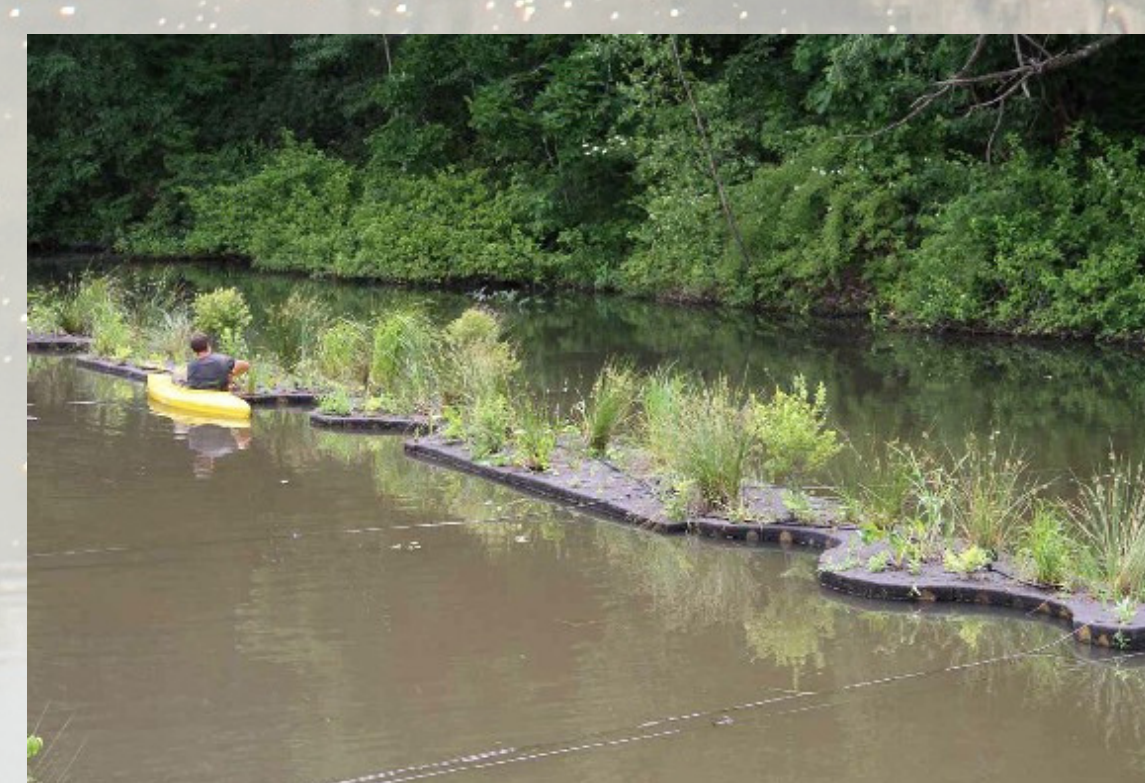
Several community stakeholders – most notably City of Malden representatives – have expressed interest in a water taxi service. This service could take many forms depending on who is administering the service, where the service runs to and from, etc. Thus, the suggested project is a comprehensive business plan for a water taxi service that details all of these things based on communication with the communities in which the taxi would operate.

MOVING FORWARD

WELLINGTON CONNECTOR



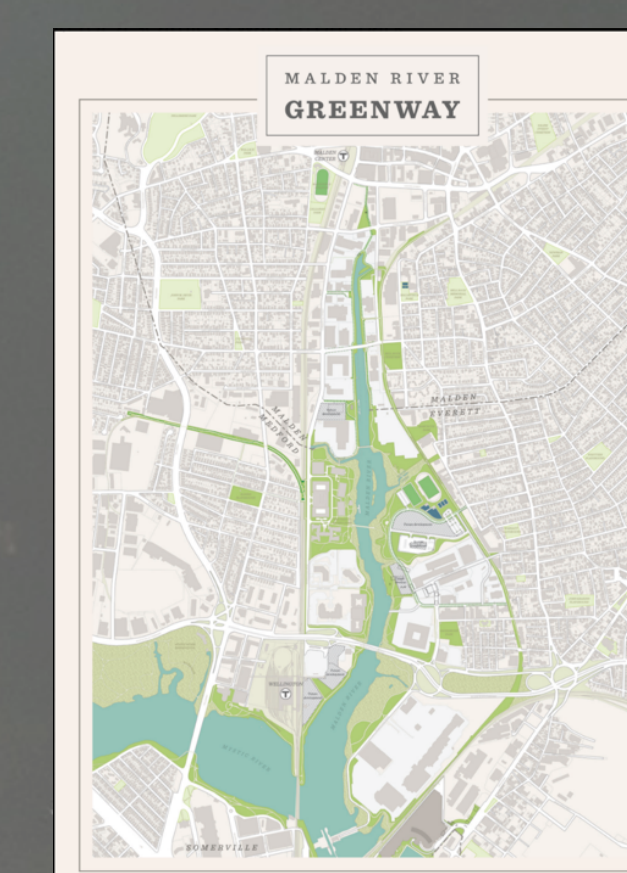
PLANT RAFT RESEARCH



URBAN PLANNING ED.



WATER TAXI



CREW TEAM PARTNERSHIPS

