



## Household Consumption of Lentils in Selected Terai Districts of Nepal: A Study on Impact of Improved Technologies



**RK Neupane, A Sharma, D Aryal, R Saha and R Gupta**  
FORWARD Nepal, Kshetrapur Bharatpur-2, Chitwan

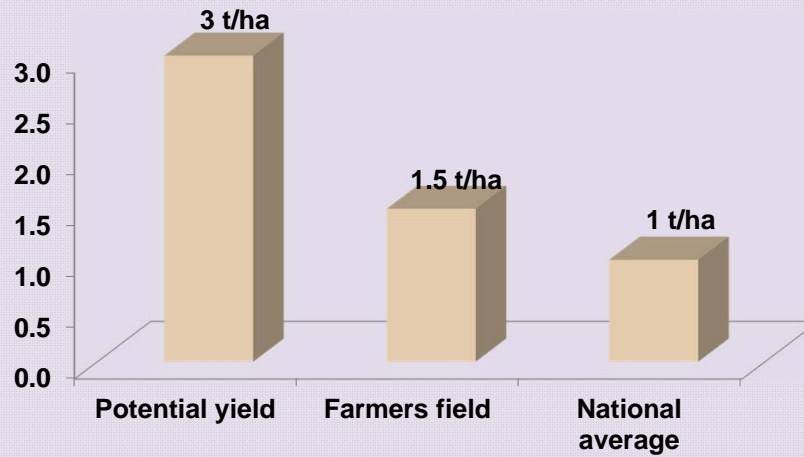


## Background

- Pulses supply the major part of the dietary protein
  - 20-25% protein by weight, which is 2-3 times that of wheat and rice
  - Good sources of micronutrients (e.g. Lentil: Fe, Zn, Beta Carotene)
  - Major pulse crops: Lentil accounts for 62 % area and production of legumes.
- Other legumes Chickpea, pigeonpea, blackgram, cowpea, mungbean, lathy us, horsegram, soybean, kidneybean
- Average Productivity (t/ha) :1.00 (MoAD, 2011/12)



## Yield GAP



## Technology Interventions

- **Improved varieties**  
Simal, Khajura 2, Khajura 1, Shikhar, Sagun
- Rhizobium inoculation
- Seed priming
- Basal application DAP Fertilizer

### Other interventions

- Capacity building of legume growers
- Training, visits, workshops, awareness raising etc.
- Market interventions: collective marketing



## **Aims of Present Study**

**To find out the adoption of improved lentil production technologies by farmers in the selected VDCs**

**To find out the changes in production, productivity and house hold consumption of lentil as a result of project intervention**



## **Methodology**

- A. Household survey involving participant before and after project intervention  
pre project 3,631 and 2,918 after the project one year of project**
- B. Key informant surveys**
- C. Focus group discussion (FGD)**
- D. Secondary data from the line agencies and published literature**



## Study districts

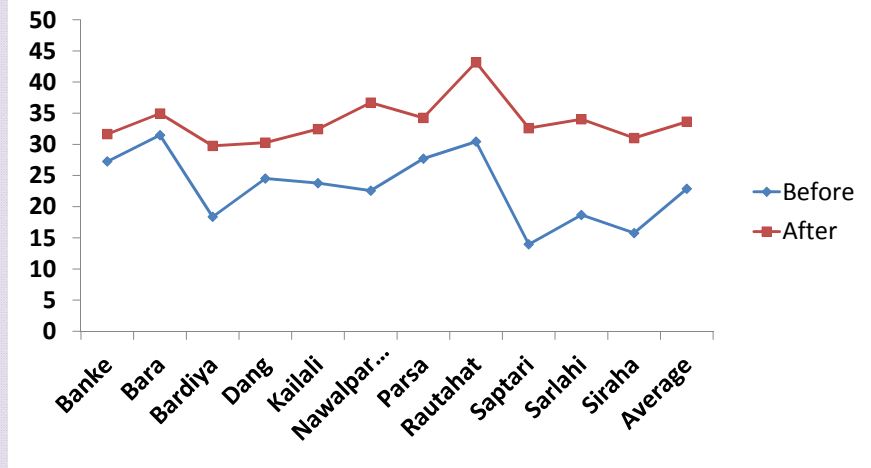


## Major Results

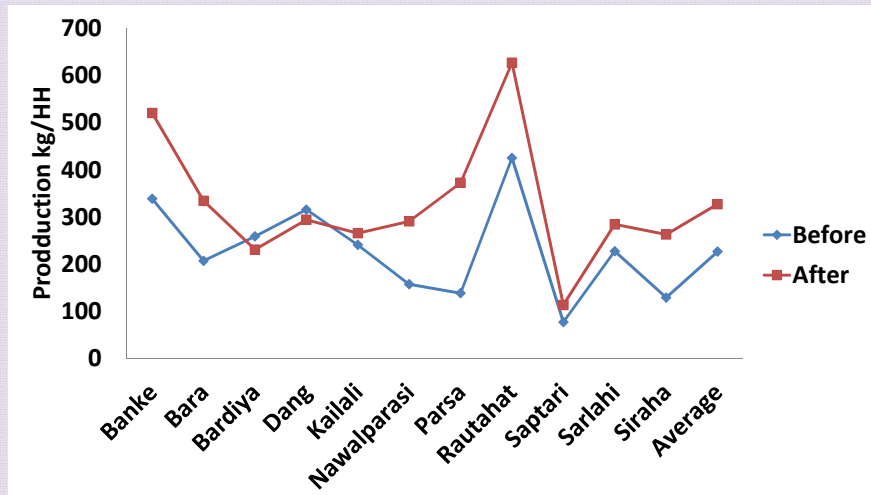
- Changes in productivity
- Changes in household production
- Changes household use/ consumption
- Changes in household sale
- Changes in household income



## Productivity (kg/katha)

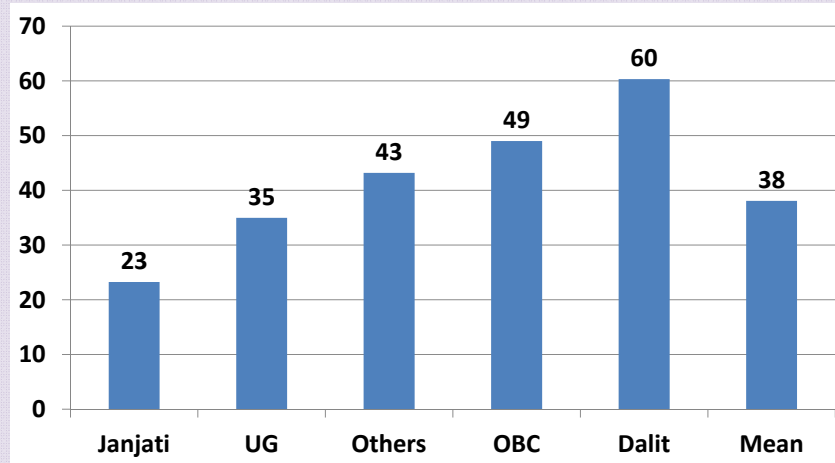


## HH production before and after

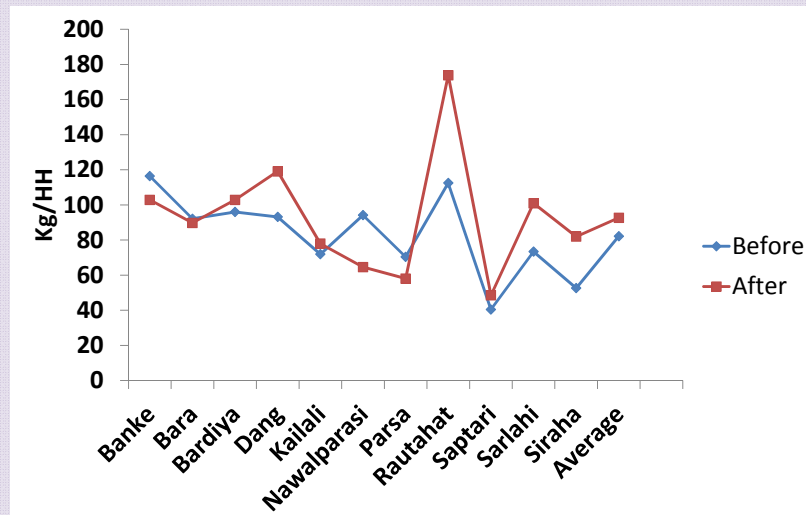


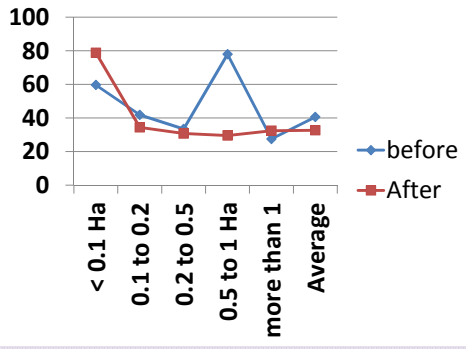


## Percent change in HH production



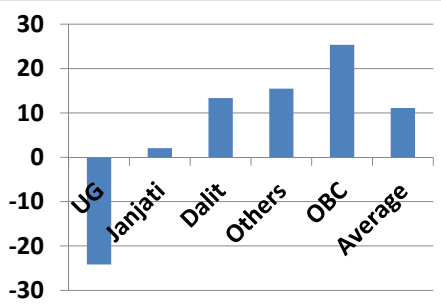
## Household consumption



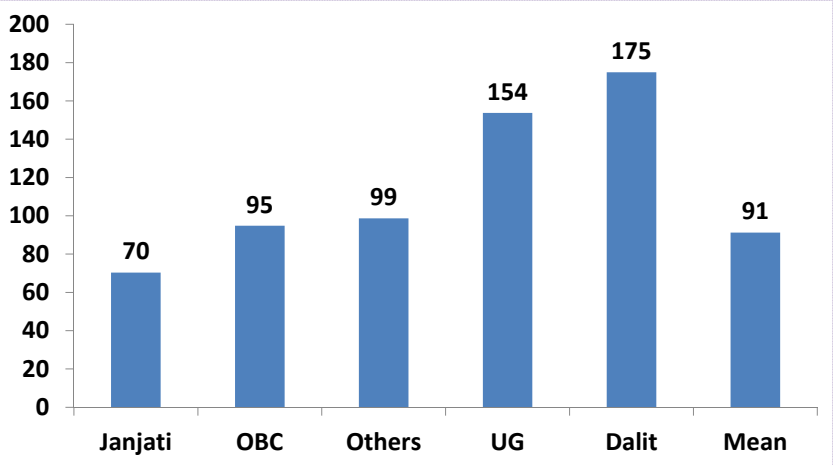


Lentil use as % of production by area/HH

% Change in HH uses by ethnic groups



Percent change in HH income







## From field to the markets



## Conclusion

- **Technology intervention has increased lentil productivity and production at the household level.**
- **Access to improved seeds and knowledge at the local level is vital for its adoption.**
- **Increases in household consumption of lentils have been recorded irrespective of household sizes.**
- **Income from the sale of pulses have been used in improving the heir livelihoods.**





## Implications

- Further scaling up of the technology in other potential pockets is suggested through two pronged approaches:
- Horizontal scaling up i.e. extending the dissemination of the complete package of technology over a wider geographical area and a larger number of people
- Vertical scaling up i.e. incorporation of lentil commercialization technology into the main stream extension, and other relevant stakeholders.



**THANK YOU**