



# GODDARD TALK

THE GODDARD CHAPEL NEWSLETTER  
Tufts University

Volume 2, Issue 2  
September, 2004

## From The Chaplain

Fall on the hill is a great time of year. I am thrilled to be able to send you our bi-annual newsletter.

Our Goddard Chapel Forum last year on "Religion & Politics" was so popular that it is now a regular program. This year the Goddard Chapel Forum will be on "Religion & Law." Please read the details inside.

Last May's graduation ceremonies had a new addition, "Renewal of Marriage Vows" in Goddard Chapel. This proved to be so popular, that every morning of the first Saturday of the month, except for May, is now set aside for this. Now all couples can have their marriage vows renewed in Goddard Chapel. Please call my office to schedule.

Please know of my willingness to serve your needs as University Chaplain. If your group would like a visit and chat, I would be happy to explore the possibilities.

Enjoy the Fall issue of Goddard Talk, and please know you are welcomed to all events listed.

Pax et Lux,

Rev. David M. O'Leary  
S.T.L., D.Phil.



### WELCOME CLASS OF '08

From the first big packet from Tufts University to Orientation Week, the members of the class of '08 are in constant contact with the Tufts University family. All members of the incoming class of '08 are sent many emails concerning their preferences for roommates, activities and, of course, subject selection for studies. The Office of Institutional Research sends out many surveys to the incoming class. One of the many questions concerns "religious preference." The information that is returned helps match up the incoming student with the welcoming worship/faith community.

*Continued on Page 4*

### Special points of interest:

- *New Fundraising Opportunity*  
See Page 5
- *Renewal of Marriage Vows*  
See Page 6

### Inside this issue:

<i>Meeting the New Associate Protestant Chaplain</i>	1-4
<i>Upcoming Chapel Events</i>	2-3
<i>Pitman Memorial Window</i>	3
<i>The Giving Camp</i>	4
<i>Friends of Goddard Chapel Society</i>	5
<i>Jewell Towne Vineyards, South Hampton, NH</i>	5



### MEETING THE NEW ASSOCIATE PROTESTANT CHAPLAIN

#### *The Reverend Chris Fike*

Chris Fike is Associate Protestant Chaplain, as well as Episcopal Chaplain at Tufts. Originally from Minnesota, Reverend Fike received a B. A. in Classical Greek and Chinese from Kenyon College and her M.Div. from Episcopal Divinity School in Cambridge. She also

has a M.S. in Library and Information Science from Simmons College in Boston and worked for several years in the MIT Library System before ordination.

From 1999 to 2004, Reverend Fike served at St. Paul's Cathedral in downtown Boston in several capacities including Cox Fellow and Priest in Charge. During that time, she

was responsible for the Cathedral's Homeless Ministries programs (including a soup kitchen and outreach and referral services) and Christian Education for all ages, as well as general parish and diocesan duties. She also participated frequently in the radio broadcast *Sunday Morning*

*Continued on Page 4*

## Upcoming Chapel Events

### GODDARD CHAPEL FORUM ON RELIGION AND THE LAW

All lectures take place at 6:00 p.m.

#### October 6 —

President William G. Sinkford, Unitarian Universalist Association

#### November 9 —

The Reverend Robert F. Drinan, S.J., Professor of Law, Georgetown University Law Center

#### December 7 —

Professor Joseph Walser, Department of Comparative Religion

#### January 25 —

The Right Reverend Thomas E. Shaw, Episcopal Diocese of Massachusetts

#### February 8 —

Rabbi Wesley Gardenswartz, Associate Rabbi Temple Emanuel, Newton Centre

#### March 15 —

Professor Ingrid Mattson, Islamic Studies and Director of Muslim Chaplaincy Hartford Seminary, 2005 Russell Lecturer

### REFLECTIONS

12:00 — 1:00 P. M.

September 21, The Reverend David M. O'Leary, S.T.L., D.Phil., University Chaplain  
"Religious Tolerance"

October 5, The Reverend Chris Fike Associate Protestant Chaplain, "Conversion in Context: How I Joined the Feminists for Paul Club"

November 2, Paul Waldau, Lecturer, Department of Comparative Religion  
"Love Thy Neighbor? Religion and the Living Beings Around Us"

December 7, David Schwartz, A'01  
"December Stories"

### CHAPLAIN'S TABLE—RELIGION AND THE ARTS

5 — 7 P. M., MacPhie Conference Room

September 23, The Reverend David M. O'Leary, S.T.L., D.Phil., University Chaplain  
"Overview of the Series"

September 30, Ben Tousley, Folksinger & Storyteller, "The Spiritual Relationship between Poetry and Music"

October 7, Kate Wheeler, Buddhist  
"Buddhist Meditations and Creative Expressions"

October 14, Cristelle Baskins, Associate Professor, Art History  
"Michaelangelo"

October 21, Donnell Patterson, Director, Third Day Gospel Choir, "Gospel: The Good News Message in Music"

October 28, Professor Ivan and Dr. Joyce Galantic, "Art as a Mirror of Faith and Religious Experience: An Historical Perspective"

November 4, Dr. Jonathan Decter, Department of Judaic Studies, Brandeis University, "Hebrew Poetry in the Middle Ages"

November 18, Janis Manzo, A'02

Graduate Student Art History, "Romanesque Church Portals: Visions of the End of the World"

December 2, Professor Emeritus Mark DeVoto, Department of Music, "The Music of Christmas"

December 9, Professor Emeritus Howard Hunter, Department of Comparative Religion, "Religion and Contemporary Art"

*Chapel Events Continued on Page 3*

***The Reverend Robert F. Drinan, S. J., Professor of Law, Georgetown University Law Center —  
Tuesday, November 9***

### Special Selected Events

Friends of Goddard Chapel Organ Concert  
Sunday, November 14, 3 p.m.

Christmas Concert  
Thursday, December 9, 4 p.m.



**Chapel Events** *Continued from Page 2*

**NOON HOUR CONCERT SERIES**

12:30 — 1:00 P. M. Goddard Chapel

September 23, John McDonald, Piano and Percussion

September 30, Richard Given, Trumpet

October 7, Epp Jurima Sonin, Soprano, with members of the Lexington Sinfonietta

October 14, Thomas Gregg, Tenor; Timothy Macri, Flute; Heinrich Christensen, Organ

October 21, To Be Announced

October 28, To Be Announced

November 4, Mark DeVoto, Organ

November 18, Ariel Wind Ensemble

December 2, An Historical Perspective on Strings  
Anatole Wieck, Viola, Violin, Viola d'amore  
Carmen Peralta, Piano

**Tiffany & Things . . .**

Louis C. Tiffany is the undisputed master of stained glass work in the United States and beyond. Goddard Chapel has an original Tiffany window. The Pitman Memorial Window is listed in one of the Tiffany Studio catalogues. (See Alistair Duncan, Tiffany Windows, New York; 1980, Simon and Schuster). Although it is not known when the window was designed or created, it may have been installed in Goddard Chapel in 1900 to commemorate the 20th anniversary of Maud Russell Pitman's death.

The Pitman Memorial Easter Lilies window is just one of the many historic highlights of Goddard Chapel. The renowned architect, John Phillip Rinn, designed and built Goddard Chapel with the stone from the Somerville quarry in 1882. The other windows of the chapel were designed by the Italian artisan, Tommaso Juglaris. Then there is our world famous Hook and Hastings organ built in 1883.

At the moment we are working with Tremont Preservation Services LLC of Boston to look into the possibility of Goddard Chapel being placed on the National Register of Historic Sites. This is a long and involved two-year project. Check our next newsletter for an update.

**Pitman Memorial Window (East Wall)  
"Easter Lilies"  
Tiffany Studios, ca. 1900**



**ABOUT MAUD RUSSELL PITMAN**

Maud Russell Pitman (nee Fisher) was the wife of Stephen Minot Pitman, an 1869 Tufts graduate and a professor of chemistry at Tufts until 1882. Little is known about Maud Russell Pitman except that she was married to Professor Pitman on October 12, 1878 and apparently died in 1880. Immediately following her death, Professor Pitman took a leave of absence from Tufts. On June 1, 1882, a year later, he resigned his position at Tufts altogether. Professor Pitman served for a time as Treasurer and Manager of the Bell Silver and Copper Mining Company of Butte, Montana and then returned East to work for the Naragansett Mutual Fire Insurance Company of Providence, Rhode Island, where he eventually became president. He married a second time to Mary Porter Pitman on February 13, 1884.

**The Reverend Chris Fike —***Continued from Page 1*

at the Cathedral, preaching an average of twice a month and occasionally hosting. During her time at St. Paul's, Reverend Fike developed a strong interest in ministry to young adults and, in 2001, co-founded New Wine, an alternative worship community for people in their twenties and thirties. In past years, she has continued to focus on young adult ministry as Interim Episcopal Chaplain at Boston University and Interim Director of Micah Project, a residential discernment and service program for people in their twenties sponsored by the Episcopal Diocese of Massachusetts. She also maintains a private practice in spiritual direction and pastoral counseling, focused primarily on young people.

In addition to her ministry, Reverend Fike works as a Clinical Supervisor at Tri-City Mental Health Center in Malden, where she oversees a day treatment program serving approximately thirty adults with chronic, major mental illness. She has two children in elementary school and her other interests include music, sports, napping and her hitherto fruitless attempts to train Elmo, the world's dumbest greyhound.

**The Giving Camp**

The Office of University Chaplain sponsors and underwrites many outstanding projects throughout the year. Here are some of the many great student projects that received funding from the Office of University Chaplain; The Leonard Carmichael Society's Faculty Waits on You Dinner & Auction, The Muslim Eid Dinner, a talk at the Hillel Center, buying new meditation cushions for the two new Buddhist groups, and the annual "Thanks for Service" Inter-Faith event in November. Another student-run project that receives funding is The Giving Camp.

This is a one, two, even three-day event for adults and children with physical



*Tufts Giving Camp Volunteers and Participants*

and mental challenges. Tufts students plan the events and serve as host for the guests of the day. Since the one-day pilot test in October, 2002, The Giving Camp at Tufts has been growing in the number of children and adults from the Medford and Somerville communities to be served. It is also a great way for many students to put into practice their book knowledge into real situations.

To learn more about The Giving Camp and even to be part of it, check out their website at <http://www.thegiving-camp.org>.

**Class of '08 Continued from Page 1**

The figures never add up to 100% because many students do not want to share their religious background. True numbers are seen at the worship/faith gatherings. But here is the breakdown of percentages of those that did list a preference.

Jewish 21%  
Catholic 20%  
Protestant 17%  
Muslim 2%  
Buddhist 1%  
Hindu 1%

The Office of University Chaplain is committed to serving the needs of all our students, of any and all religious/spiritual backgrounds.

# FRIENDS OF GODDARD CHAPEL SOCIETY

The Friends of Goddard Chapel Society was established to support the work of the Office of University Chaplain, its programming, and to continue the beautification of Goddard Chapel proper.

Below are some opportunities for giving to support the programming of the Office of University Chaplain and Goddard Chapel.

The pews are in need of some new cushions for which you could help with the cost.

There is a need for new liturgical vestments for Catholic, Protestant & Orthodox worship services.

The Fall Lecture at Goddard Chapel is looking for a benefactor and would become the "Name" Lectureship.

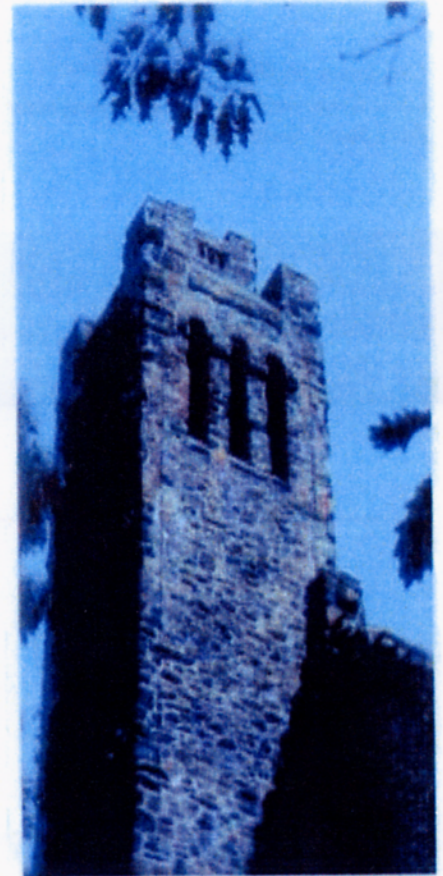
The entire Chapel area is in need of air conditioning for spring, summer, and fall weddings and events. A special "Name Plaque" would be placed in the foyer of Goddard Chapel.

Finally, there is an opportunity to endow the Office of University Chaplain with a chair, this becoming the "Name" Professor of Religion & Society.

If you would like more information on any of the above giving or/ and naming opportunities, please call the University Chaplain, at (617) 627-3427.

## Jewell Towne Vineyards, South Hampton, NH

A new fundraising opportunity is in the making for the "Friends of Goddard Chapel Society" thanks to the great cooperation of Dr. Peter Oldak, A64, and owner of the Jewell Towne Vineyards. Two wines featuring a picture of Goddard Chapel will soon be on the market. These wines will be available for a donation of \$30 for two bottles. Because of various state laws, shipping is not possible. But do stop in to find out how you can purchase these wines. It is hoped that the wines will be available for Homecoming Weekend, Parents Weekend, and the holiday season in December. A portion of the proceeds will go to the "Friends of Goddard Chapel Society," which helps support the continuing beautification of Goddard Chapel and its programming.



FRIENDS OF GODDARD CHAPEL SOCIETY DONATION	
NAME	_____
ADDRESS	_____
CITY	STATE/ZIP _____
PHONE #/EMAIL ADDRESS	_____
DONATION AMOUNT \$	_____

## Tufts University

*University Chaplaincy  
Goddard Chapel  
Three The Green  
Medford, MA 02155*

*Phone: (617) 627-3427*

*Fax: (617) 627-2447*

*Chaplaincy Staff  
Linda Karpowich, Chaplaincy Coordinator  
Edith Stead, Secretary*

**RENEW YOUR MARRIAGE  
VOWS!**

**EVERY 1ST SATURDAY OF THE  
MONTH 9 A. M.— 12 NOON**

**(EXCEPT MAY, WHICH WILL  
BE MAY 21ST)**

**CALL GODDARD CHAPEL TO  
MAKE ARRANGEMENTS** ▽

**(617) 627-3427**

**We're on the Web!**  
**[www.tufts.edu/chaplaincy](http://www.tufts.edu/chaplaincy)**

---

Tufts University  
Goddard Chapel  
3 The Green  
Medford, MA 02155