



# FEED THE FUTURE

The U.S. Government's Global Hunger & Food Security Initiative

## Aflacohort Study Field Operations and Accomplishments

What happens on a day to day basis and what have we achieved so far?



**USAID**  
FROM THE AMERICAN PEOPLE



**PURDUE**  
UNIVERSITY



**Tufts**  
UNIVERSITY

**GERALD J. AND DOROTHY R.**  
Friedman School of  
Nutrition Science and Policy



## STUDY AREA

**The study catchment areas includes 17 VDCs in Banke district**

- Basudevpur
- Bageshwori
- Bankatwa
- Belhari
- Ganapur
- Khaskarkado
- KhajuraKhurda
- Kohalpur
- Manikapur
- Puraina
- Puraini
- Rajhena
- Samshergunj
- Sonpur
- Tithiriya
- Udharapur
- Udayapur





# FEED THE FUTURE

The U.S. Government's Global Hunger & Food Security Initiative

## STUDY AREA



**USAID**  
FROM THE AMERICAN PEOPLE



GERALD J. AND DOROTHY R.  
Friedman School of  
Nutrition Science and Policy



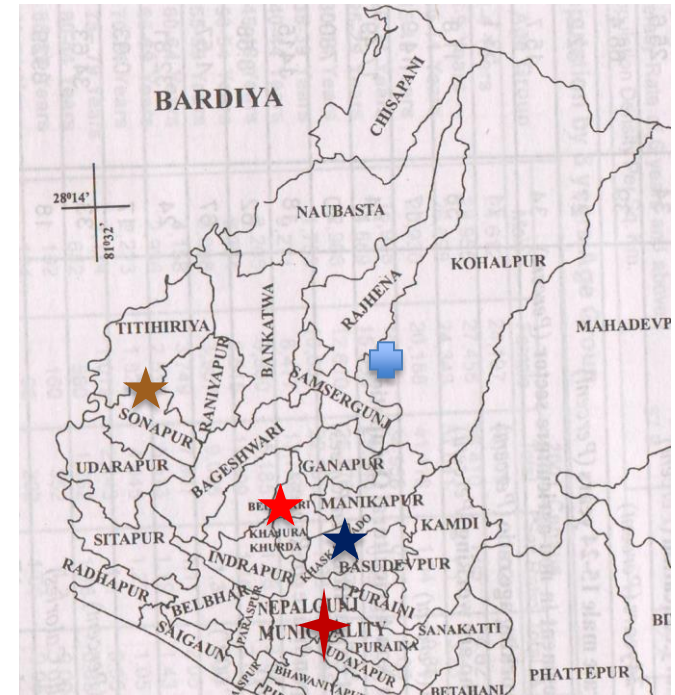
## STUDY AREA

Where we were yesterday

- Team A: KhajuraKhurda and Sonapur
- Team B: Khaskarkado and Sonapur
- Nepalgunj Medical College, Kohalpur

Today

- Aflacohort Study Office, Nepalgunj





## STUDY TEAM

### Field Team

Supervisors

Enumerators

Field Assistants

### Clinical Team

Head Nurse

Nurses

Lab Technologist

USG Doctors

### Aflacohort Study Office

Logistics/Admin

Support Staff

Vehicle Driver





## STUDY TEAM

### Field Team

- 17 enumerators – One for each VDC.
  - Survey data collection and anthropometrics
- 17 enumerators supported by 17 field assistants
  - Assist the enumerators and maintain good relationships with participants.
- 6 supervisors who monitor 3 enumerators and 3 field assistants each.
  - Supervisors devise weekly plans, monitor enumerators, work closely with the head nurse and the clinical team.





# FEED THE FUTURE

The U.S. Government's Global Hunger & Food Security Initiative

## STUDY TEAM

### Clinical Team

- Head Nurse who monitors all clinical and lab operations
- 4 Clinical nurses who carry out the blood sample collection activities
- 1 Lab technologist who processes blood samples
- Ultrasound examination doctors



**USAID**  
FROM THE AMERICAN PEOPLE



GERALD J. AND DOROTHY R.  
Friedman School of  
Nutrition Science and Policy



# FEED THE FUTURE

The U.S. Government's Global Hunger & Food Security Initiative

## STUDY TEAM

### **Aflacohort Study Office**

- Logistics associate – Manages procurement of supplies, billings, employees' work hours, etc.
- Office Support staff – General office work
- Vehicle Driver – Assists the clinical team especially during monsoon



**USAID**  
FROM THE AMERICAN PEOPLE

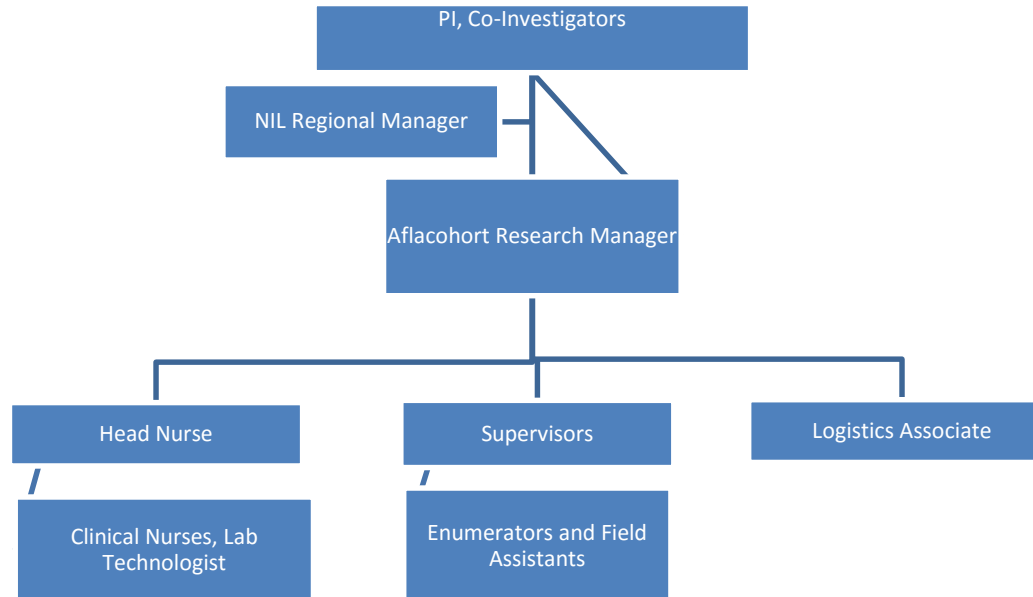


GERALD J. AND DOROTHY R.  
Friedman School of  
Nutrition Science and Policy



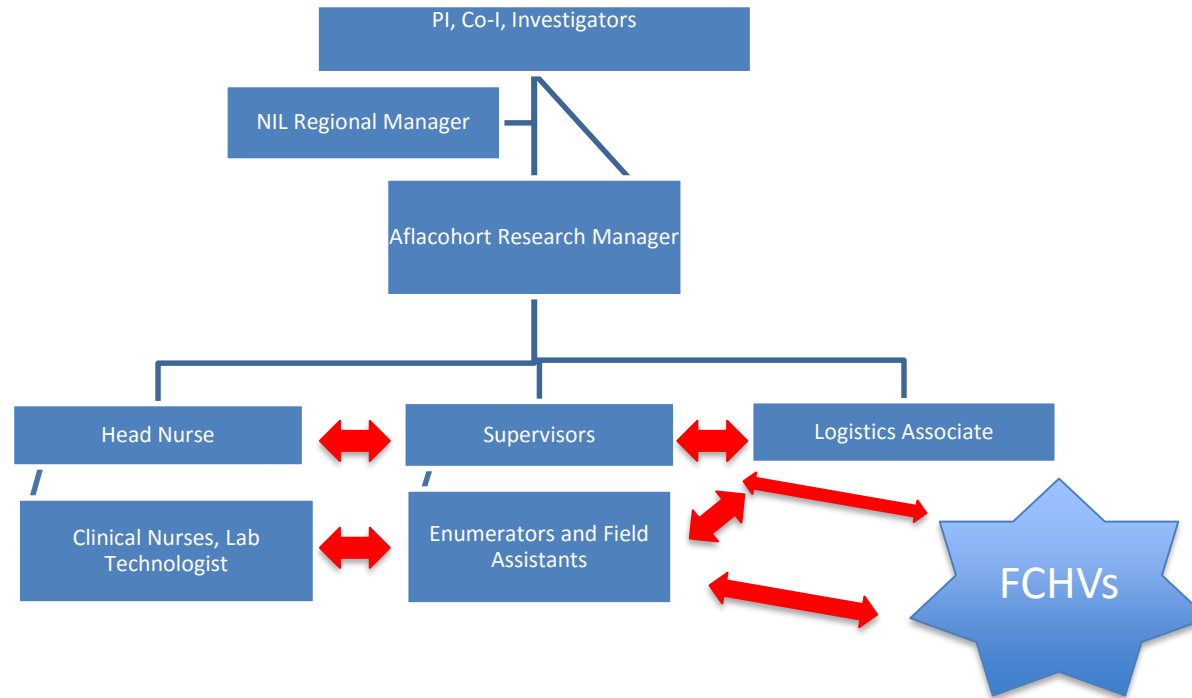


## REPORTING STRUCTURE





## COMMUNICATION STRUCTURE





## MONITORING

- Supervisors fill out Master Tracking Sheets (MTS) which helps them track the various time point dates for each participants by VDC.
- The Research Manager and Data manager monitor the MTS regularly
- The Data manager also checks the quality of data from the field
- The enumerators are monitored by the supervisors via their weekly reporting and planning mechanism
- The head nurse monitor the nurses' performance and quality of data





## REPORTING

- The Research Manager sends out weekly statistics report, weekly updates, and End of Participation details to the Principal investigator and other investigators.
- The supervisors submit weekly reports and monitoring reports to the Research Manager
- The Head nurse submits weekly clinical report to the Research Manager
- A quarterly report is sent to the District Public Health Office (DPHO)





# FEED THE FUTURE

The U.S. Government's Global Hunger & Food Security Initiative

## DAY TO DAY OPERATIONS

Sunday: Supervisors  
fill in Master  
Tracking Sheet

Monday: Data  
collection

Tuesday: Weekly  
management team  
meeting with KTM  
and Boston team

Wednesday: RM  
sends weekly  
reports to all  
investigators

Thursday: Sample  
Shipment and Data  
collection

Friday: Weekly Field  
Team Meeting and  
planning for the  
week



**USAID**  
FROM THE AMERICAN PEOPLE



GERALD J. AND DOROTHY R.  
Friedman School of  
Nutrition Science and Policy



# FEED THE FUTURE

The U.S. Government's Global Hunger & Food Security Initiative

## ACCOMPLISHMENTS

### By the end of July 15<sup>th</sup>

- Enrollment complete (1670 mothers)
- Time Point 1 data collection (both survey and clinical data) is complete
- All of the blood samples of pregnant mothers will be shipped to Georgia next week



**USAID**  
FROM THE AMERICAN PEOPLE



GERALD J. AND DOROTHY R.  
Friedman School of  
Nutrition Science and Policy



**FEED THE FUTURE**

The U.S. Government's Global Hunger & Food Security Initiative

## ACCOMPLISHMENTS

### **By the end of July 15<sup>th</sup>**

- At Time point 2 - 593 infants are enrolled in the study
- At Time point 3 (i.e. when the infant is 3 months of age) - 198 survey questionnaires and 168 infant blood draws have been carried out



**USAID**  
FROM THE AMERICAN PEOPLE

**Tufts**  
UNIVERSITY

GERALD J. AND DOROTHY R.  
Friedman School of  
Nutrition Science and Policy



# FEED THE FUTURE

The U.S. Government's Global Hunger & Food Security Initiative

## ACCOMPLISHMENTS

### By the end of July 15<sup>th</sup>

- At Time point 4 (i.e. when the infants are 6 months of age) – 64 survey questionnaires and clinical samples have been collected
- At Time point 5 (i.e. when the infants are 9 months of age) – 36 time point 5 visits have been completed



**USAID**  
FROM THE AMERICAN PEOPLE



GERALD J. AND DOROTHY R.  
Friedman School of  
Nutrition Science and Policy





# FEED THE FUTURE

The U.S. Government's Global Hunger & Food Security Initiative

## ACCOMPLISHMENTS

### By the end of July 15<sup>th</sup>

- 34 Year 1 visits (i.e. visit a year after enrollment) have been completed
- A total of 1433 Ultrasound examinations have been completed. In addition, hemoglobin measurement and blood pressure checks are done during every clinical visits.



**USAID**  
FROM THE AMERICAN PEOPLE

**Tufts**  
UNIVERSITY

GERALD J. AND DOROTHY R.  
Friedman School of  
Nutrition Science and Policy



# FEED THE FUTURE

The U.S. Government's Global Hunger & Food Security Initiative

## KEY PARTNERS

- District Public Health Office, Banke
- Female Community Health Volunteers (FCHVs) in each VDCs
- VDC Health post in charge
- Nepalgunj Medical College, Kohalpur
- SUAAHARA-II Team



**USAID**  
FROM THE AMERICAN PEOPLE



GERALD J. AND DOROTHY R.  
Friedman School of  
Nutrition Science and Policy



## CHALLENGES

- Refusals and participant dropouts
  - **Missing data??**
- Monsoon: Poor Road Conditions





# FEED THE FUTURE

The U.S. Government's Global Hunger & Food Security Initiative

## MANY THANKS!!



# USAID

FROM THE AMERICAN PEOPLE



**USAID**  
FROM THE AMERICAN PEOPLE



GERALD J. AND DOROTHY R.  
Friedman School of  
Nutrition Science and Policy



# FEED THE FUTURE

The U.S. Government's Global Hunger & Food Security Initiative

QUESTIONS??  
COMMENTS??



**USAID**  
FROM THE AMERICAN PEOPLE



**GERALD J. AND DOROTHY R.**  
Friedman School of  
Nutrition Science and Policy



# FEED THE FUTURE

The U.S. Government's Global Hunger & Food Security Initiative

[www.feedthefuture.gov](http://www.feedthefuture.gov)



**USAID**  
FROM THE AMERICAN PEOPLE



**GERALD J. AND DOROTHY R.**  
Friedman School of  
Nutrition Science and Policy