

LUCIFER

Stephany Svorinić

Lucifer is an air elemental associated with the East. Known as the “Light Bringer,” She is associated with the inner quest for knowledge and is often misconstrued as being Satan.



breath tone; black diamond note-heads indicate values of a quarter note or less



breath tone; white diamond note-heads indicate values of half note or more



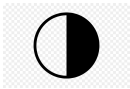
Small circle above staff indicates breath tone



Small black circle above staff indicates normal sound



Horizontal arrow above staff indicates a gradual transition from one technique to another (ex: air sound to normal)



Half-shaded circle indicates half breath tone, half normal sound



Flutter tongue



Crescendo from nothing



Decrescendo to nothing



Overblow freely

General

- bisb.: bisbigliando, color trill
- Trills are always a half step up

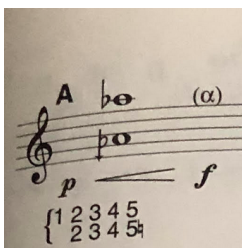
tasas

Incant the given phonemes and/or consonants into instrument with given rhythms, while simultaneously playing breath tone indicated. See pronunciation chart below.

Pronunciation Guide	<i>unlisted consonants follow English norms</i>
rrr	must be rolled
e	e as in “egg”
ni	“knee”
ç	German ich-laut (sounds like a cat’s hiss)
ah	“ah”
sss	overdone “S” like a snake hissing
u	“oo” of “pool”
be	“be” of “bell”
bi	“bee”
l (tall i)	“eat”
ka	Boston “car”
Lu	“loo”
i	“i” of “it”
fff	“f” from “feel”
er	“ur” of “fur”

Multiphonics

first two taken from <http://www.altoflute.co.uk>



Taken from *Present Day Flutes – Treatise on contemporary techniques of transverse flutes for the use of composers and performers* (Flûtes au Présent) By Pierre-Yves Artaud

Down Arrow: lower by an eighth tone
 Flat with Down Arrow: three quarter tones lower

Lucifer

Very rubato and free, like air
face East while performing

Stephany Svorinić

Alto Flute

p *mp* *mf* *f* *ff*

A. Fl.

p *f* *p* *mf* *p* *mf*

A. Fl.

mf

incantation

rrr - e - ni - ç tah - sss - ah

f *p* *mf* *f* *f* *p*

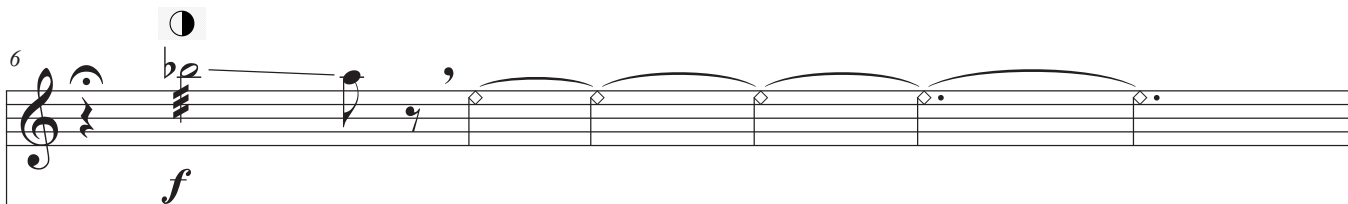
A. Fl.

mp *p* *f* *p*

A. Fl.

f *f*


overblow

A. Fl.  **f**

6 *incantation*

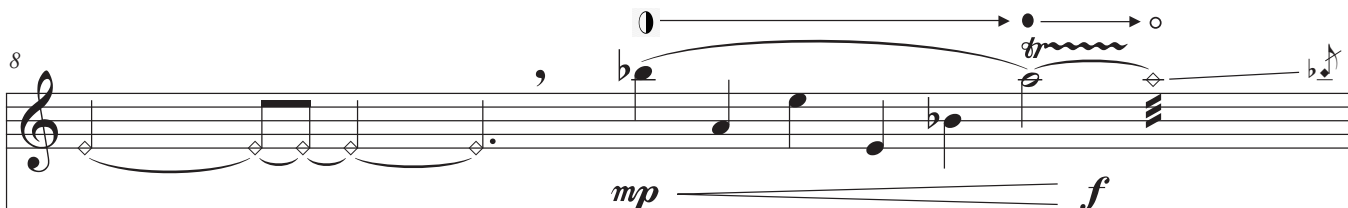
u - be-rrr - ah - sss - ah

mf f p mf f

A. Fl.  **mp** *bisb.*

7 *portamento by turning flute*

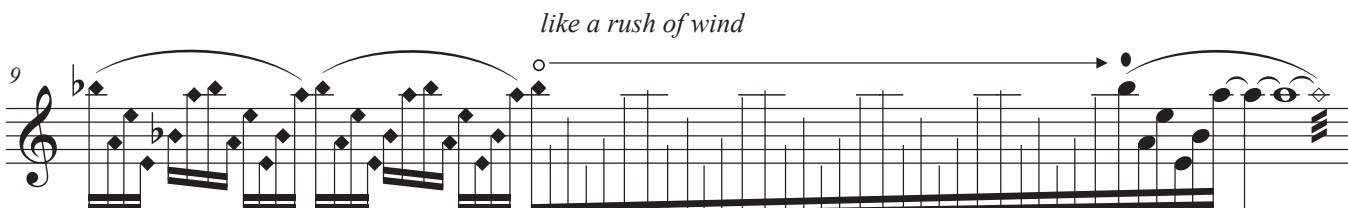
f p p f

A. Fl.  **mp** *tr*

8 *incantation*

bi-ah - sss - ah

mf f

A. Fl.  **p** *like a rush of wind*

9 **f**

A. Fl. 10

p *f*

overblow

A. Fl. 11

f

fluctuate whistle tones

A. Fl. 12

p *f*

3 complete pitchless inhalations and exhalations into body of flute

p - *f*

I - *ka* - *rrr*

slow, purposeful

A. Fl. 13

p *f* *p* *f* *mp* *f*

fluctuate whistle tones

fluctuate whistle tones

Lu - *sss* - *i* - *fff* - *er* - *rrr*