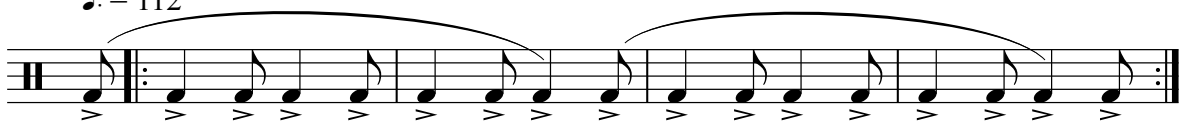


***Nak̄hi-waa* lead guṅ-gṅ drumming "To to" (entrance)**

♩. = 112



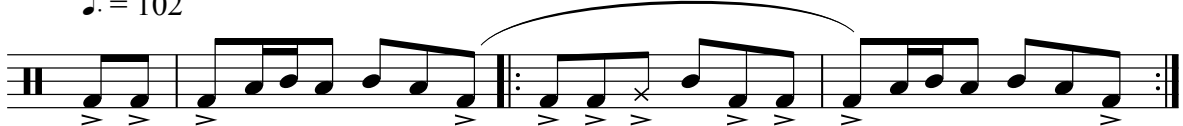
***Nak̄hi-waa* lead guṅ-gṅ drumming "Naa ḡṅ, to ti Naa ḡṅ"**

♩. = 102



***Nak̄hi-waa* lead guṅ-gṅ drumming "Ka pa Naa ḡṅ ka ḡṅi"**

♩. = 102



***Nak̄hi-waa* lead guṅ-gṅ drumming "To ti Naa ḡṅ maa ḡṅ tum"**

♩. = 102



***Nak̄hi-waa* lead guṅ-gṅ drumming "Nak̄hi-naa o nim sayi di" [not recorded]**

♩. = 102

