

## POSHAN Process research: Understanding processes that support nutrition program impacts

Shibani Ghosh  
Nutrition Innovation Lab- Asia and Africa  
Tufts University



## Research Questions

- How and why large-scale, multi sector policies and programs achieve nutrition goals?
- How can policy and program implementation be enhanced to support both nutrition-specific and nutrition-sensitive actions?



Friedman School of Nutrition Science and Policy

## Program Steps and Stakeholders

Stage	Key actors (examples)
Design	Policy makers, program planners
Implementation Delivery	Program managers, supervisors, frontline health workers
Utilization	Communities, families, individuals
Nutrition and health impact	Program clients (families, women, children)

JN THE JOURNAL OF NUTRITION

© 2008 by the American Society for Nutrition

by J L , Menon P J. Nutr. 2008;138:628-629

Friedman School of Nutrition Science and Policy

### Measuring impact in the Millennium Development Goal era and beyond: a new approach to large-scale effectiveness evaluations

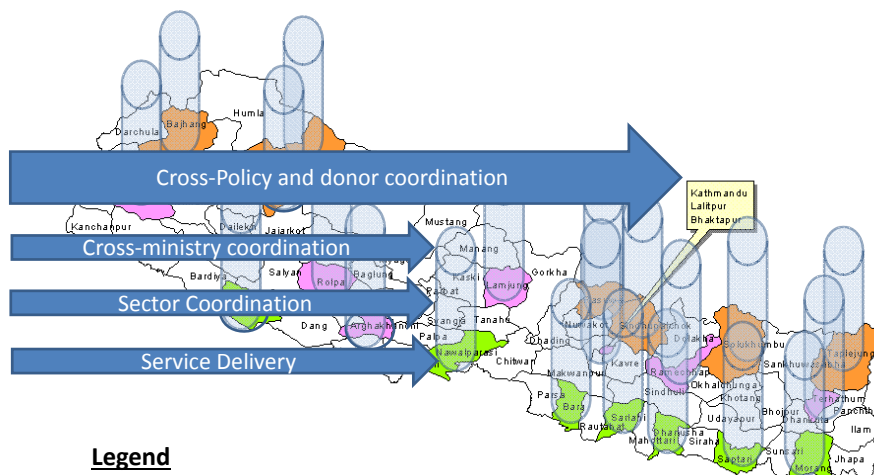
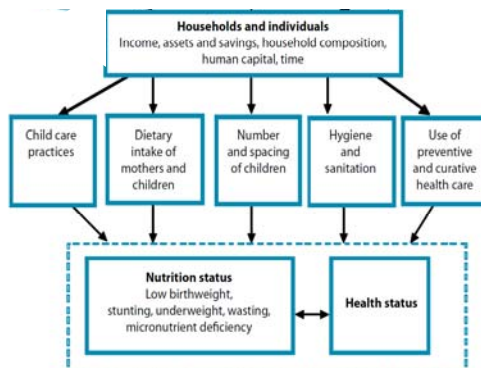
Cesar G Victora, Robert E Black, J Ties Boerma, Jennifer Bryce

```

    graph TD
      A[General socioeconomic and other contextual factors (eg. poverty, employment, food production, fertility)] --> B[Programme]
      A --> C[Routine health services (eg. health facilities, hospitals, human resources)]
      A --> D[Other health programmes (eg. family planning, food distribution, bednets)]
      A --> E[Interventions in other sectors (eg. water, sanitation, education, transportation)]
      B --> F[Coverage (eg. proportion of the target population receiving the interventions delivered by the programme)]
      C --> F
      D --> F
      E --> F
      F --> G[Impact (eg. under-5 mortality, undernutrition, maternal mortality)]
      G --> B
  
```

Figure 1: Outline of factors affecting maternal and child health and nutrition

World Bank (2010) *What can we learn from nutrition impact evaluations?* Washington, D.C.



**Legend**

- Mountain Districts
- Hill Districts
- Terai
- Sentinel Sites



## Key Issues in vertical and horizontal coherence

- **Individual capacity:**  
Skills, knowledge, training, experience, attitudes to multi-sector actions, nutrition goals, priority problems
- **Institutional capacity:**  
Perceived constraints to multi-sector collaboration, resource use efficiency,
- **System capacity:**  
Disincentives to collaboration, innovation, venues for dialogue, roles and responsibilities,

Gillespie et al. (2013) Lancet Series 2 Paper 4

7

## Questions


- Perceived constraints in working across sectors
- Incentives for collaboration across institutions and sectors
- Expected hurdles to multi-sector coordination
- Knowledge and training in nutrition



Friedman School  
of Nutrition Science and Policy


## Methods

- Structured open ended questionnaires
- ~ 700 interviews (national down to ward)
- Annual surveys
- First survey conducted: February to June 2013
- Data entry in process
- Preliminary findings: September 2013



Friedman School  
of Nutrition Science and Policy

Level	Institution/Individual
National	Policy makers, donors, INGOs, academics
Regional	Administrator, RD Health, RD Agriculture, RD Livestock, RD Education, RD DWS, RD WD
District	LDO, DHO/DPHO, Agriculture, Livestock, Education, DWS, Chamber of Commerce Program Office Social Dev Sec DDC, Planning Off, DDC, Chair NGO federation, NGOs
Ilaka	Health, Agriculture, Livestock, Edu Resource Center
VDC	VDC Secretary, Health, Agriculture, Livestock, Education (school teacher), NGOs
Ward	FCHV, Representative – Ward Citizen Forum, Representative MG, Representative Cooperative/Groups



Friedman School  
of Nutrition

## Analysis

- Degree of vertical coherence within sector
  - E.g. priority problems, interventions needed, importance of multi-sector actions
  - Ministry of Agriculture, Regional Agriculture office down to ward
- Degree of collaboration across sectors (horizontal concurrence)
  - Within region, district, VDC, ward
- Effect of concurrence and coherence on variability of outcomes on the ground (community)
- Change in concurrence or coherence over time (MSNP and program implementation)

